



Community News of Meadview and Lake Mead City

SPONSORED BY
THE COMMUNITY ORGANIZATION OF MEADVIEW

online at <www.comaz.info>

Adrienne O’Keeffe-Editor
Jonathan Kiser--Assistant Editor

JANUARY 3, 2025

HAPPY NEW YEAR FROM THE 2025 COM BOARD



From left to right: Tom O’Keeffe, Treasurer; Rita Caldwell, Hostess; Adrienne O’Keeffe, Secretary; Cindy Kehoe, Hostess; Anthony Carter, Co-Vice President; Connie Hargreaves, Asst. Secretary; Jonathan Kiser, President
Insets: Karen Stacy, Vice President; Carl Stacy, Large Bin Pick-up Coordinator

COM FEBRUARY 6 MEETING



COM is pleased to announce our speaker for the February COM Meeting will be Mohave County Sheriff Schuster and some of his staff members. Sheriff Schuster always puts on an informative, but entertaining program. Be sure to mark your calendars. You don’t want to miss this one.

The meeting will start at 10:00 am in the MCA Auditorium. Refreshments will be served at 9:45.

IMPORTANT DATES AND EVENTS

- January 4 Farmer’s Market Meadview Marketplace 9am-noon
- January 8 Busy Hands—MCA Auditorium 10:30am—6:00pm
- January 8 Game Night—MCA Auditorium from 6 pm -8:30
- January 11 MCA Quarterly Membership Meeting at 9:00 am
- January 14 Meadview Area Chamber of Commerce Meeting at the Barn at 5:30 pm.
- January 14 St. Mary’s Food Distribution VFW parking lot 10am

IN THIS ISSUE...

- Community Event Calendar January Page 2
- Mohave County Corner with SueAnn Mello Page 3
- Thank You X 3 for Meadview Kindness Page 3
- Meadview Connection—Church News Page 5
- Anthony’s Sports Corner Page 5
- Mohave County Library Update Page 5
- And One More Thank You Page 5

Happy New Year, Meadview

MEADVIEW COMMUNITY EVENT CALENDAR FOR JANUARY 2025

- January 3** Bingo in the MCA Auditorium. Doors open at 12:00 and games begin at 1:00 pm
- January 4** Farmer's Market in the Meadview Marketplace from 9:00—Noon
- January 8** Busy Hands—MCA Auditorium from 10:30 am —6:00 pm
- January 8** Game Night in the MCA Auditorium from 6:00 pm - 8:30 pm
- January 10** Bingo in the MCA Auditorium. Doors open at 12:00 and games begin at 1:00 pm
- January 11** MCA Quarterly Membership Meeting in the Auditorium at 9:00 am
- January 14** Meadview Area Chamber of Commerce Meeting at the Barn at 5:30 pm.
- January 14** St. Mary's Food Distribution in the VFW parking lot 10:00 am
- January 15** Busy Hands—MCA Auditorium from 10:30 am —6:00 pm
- January 15** Game Night in the MCA Auditorium from 6:00 pm - 8:30 pm
- January 17** Bingo in the MCA Auditorium. Doors open at 12:00 and games begin at 1:00 pm
- January 18** Farmer's Market in the Meadview Marketplace from 9:00—Noon
- January 20** Martin Luther King Day—Federal Holiday. Banks, schools, government offices and post offices closed,
- January 21** Quail Meeting at 10:00 am in the MCA.
- January 22** Busy Hands—MCA Auditorium from 10:30 am —6:00 pm
- January 22** Game Night in the MCA Auditorium from 6:00 pm - 8:30 pm
- January 23** Lake Mohave Ranchos Fire District Board Meeting in the MCA at 1:00 pm
- January 24** Bingo in the MCA Auditorium. Doors open at 12:00 and games begin at 1:00 pm
- January 25** Neighborhood Watch Meeting in the MCA Auditorium at 10:00 am.
- January 29** Busy Hands—MCA Auditorium from 10:30 am —6:00 pm
- January 29** Game Night in the MCA Auditorium from 6:00 pm - 8:30 pm
- January 31** Bingo in the MCA Auditorium. Doors open at 12:00 and games begin at 1:00 pm

HANDYMAN SERVICE

Carpentry, Electrical, Plumbing,
RV Service, Decks, Bathrooms,
Kitchens, Painting,
Sheetrock, etc.

(928) 830-4079

Senior Discount

Joe Cherry

COMMUNITY NEWS

Published every other Friday

Due to the increased cost of publishing the Community News, we are forced to raise our advertising rates. These rates will be effective immediately.

Fees for ads: 3" ad: \$6.00 per issue,
1/4 page: \$8.00 per issue, \$80/10 issues, \$160/20 issues
Half page: \$16.00 per issue, \$160/10 issues. \$320/20 issues
Full page: \$32.00 per issue, \$320/10 issues, \$640/20 issues
Business card ad/\$6.00 per issue

Please put ads with the payment into the Community News drop box at the Post Office or mail to P.O. Box 31, Meadview, **Make checks payable to "COM"**. Ads can be emailed to comads@comaz.info and payment can be put in the drop box at the post office.

The next issue date is January 17, 2025 The deadline is January 11, 2025 at 4:00 pm.

The opinions expressed in this publication are those of the authors submitting various articles and do not reflect the opinions of COM, the board or its members. COM also reserves the right to refuse to accept any advertising that may be illegal or not in compliance with our platform.



**COUNTY CORNER
BY SUEANN MELLO,
MOHAVE COUNTY TREASURER**



As your Mohave County Treasurer, I would like to provide you with information regarding how real property, whether tax deeded or excess county-owned, may be purchased.

The first available option to purchase Mohave County's tax deeded parcels is through the Tax Deed Sale (TDS) auction which the County historically hosts the beginning of March. For the upcoming TDS, upon receiving Board of Supervisors (Board) approval, a tentative list of over 800 parcels will be available for purchase to the highest bidder of each parcel. After the auction, the Board will execute, record, and deliver a quit claim deed transferring ownership from the State of Arizona to the winning bidder. The parcel will then be free and clear of all County-held liens (existing easements remain).

For those interested in participating in the upcoming auction, please visit the Public Surplus website at www.publicsurplus.com to create your bidder account. During the week of the auction, bidders will have the opportunity to submit their bids from Monday through Friday with auctions ending throughout the final day on Friday. The most up-to-date information on the upcoming TDS auction will be found on the Clerk of the Board's website at www.mohave.gov.

The second option to purchase Mohave County's tax deeded parcels is through the new Over-the-Counter process overseen by the Office of the Clerk of the Board. From April 15 - November 30 of each year, unsold parcels from the TDS are now available for purchase to the highest bidder. The procedures and required documents to submit an offer for available parcels are found on the Clerk of the Board's website. This new process started in September of this year, and I am happy to report that of the 103 parcels that were available for Over-the-Counter purchase, 16 parcels received individual bids that were then approved by the Board thereby returning the parcels to private ownership and the tax roll.

Separate from tax deeded parcels, at the November 18 Board of Supervisors meeting, the Board was presented with a list of excess county-owned real property which the Board approved for staff to proceed with the statutory steps to sell. The Treasurer's Office will be working with the County Manager and departments to make these parcels available for purchase. The County is in the initial phase of this process and will provide additional information as it becomes available.

Delinquency notices were mailed out the first week of December. To avoid receiving a delinquency penalty and having a lien placed on your parcel, the amount owed must be redeemed on or before December 31, 2024.

In the coming months, I will be working with our state legislators to pass common-sense legislation that supports you, the taxpayer, and meets the needs of our local government. I look forward to serving you, the residents of Mohave County, for many years to come.

I wish you a Merry Christmas and a Happy New Year!
May God bless Mohave County!

THANK YOU X 3 FOR MEADVIEW KINDNESS!!!

Thank You #1: A big thank you to Maureen Vorce and her team of "elves" for organizing the Meadview Giving Tree at Fisherman's Landing. This year, 63 tags representing Meadview children were selected by generous Meadview folks. Christmas 2024 was a little more special because of the gifts purchased by Meadview residents who picked up the tags. Some folks even picked tags for an entire family. The donated gifts were supplemented by other gifts purchased with money raised from raffle sales for items donated by local businesses. After the bags were put together, they were personally delivered to each child or family. And hopefully, their Christmas was little better.

Thank You #2: Another thank you to Stacy Glaser, Edie Needham and their team of "elves" for another successful Santa Run. With the help of many volunteers, numerous bake sales and fund raisers, they kept another Meadview tradition alive. Since early November, "Wish Lists" were gathered from 104 Meadview children. Then, they tackled the job of purchasing the gifts and wrapping them for each child to be ready for the Santa Run on Christmas Eve.

Thank You #3: And lastly, we cannot forget to thank our local post office workers for going over and beyond in getting our holiday mail sent and received. Thank you for the extra hours worked and longer window hours up to Christmas Eve to assure that every piece of holiday mail was delivered in time for Christmas. We are so fortunate to have such a dedicated team of postal workers here in Meadview.

NEWLY FORMING IN MEADVIEW The "Wholistic Guild"

(Guild: an association of persons for the furtherance of a similar purpose—in this case, HEALTHINESS!!)

Do you see or feel the need within you to Encourage and Support Preventive Wellness in our community??

Do you have a background in Natural Health and Healing methods??

Would you be interested in Sharing Your Knowledge via Workshops or Classes?

Are you open to actively Sharing your Skills and Training with those in need??

If so, please consider joining our Guild!!
We will be creating a Directory of Subjects and Services prior to our kick-off event:

MEADVIEWS FIRST ANNUAL
WHOLISTIC HEALTH FAIR
MARCH 29, 2025
10:00 AM-4:00 PM at the MCA

Questions ??
Call Judyrose at (970) 234-4776



KINGMAN PREMIER PROPERTIES

OF MEADVIEW

Dawn Brannies, Designated Broker

INCREDIBLE SQUARE FOOTAGE PRICING



Reduced by \$30,000.00 from Previous Listing
Open Split Plan with 4th Bedroom Option
On Corner Lot bordering BLM Land
Drive-Through Boat Deep Garage

Always Ready to help you List and Sell!

Jonathan Kiser, Manager
Kat Howard, Sales ♦ Darlene Post, Sales
Christina Purkiss, Sales

(928) 564-2222 ★ 335 E. Pueblo Drive

SPECIAL OFFER
25%
Ends soon!!

Glaser Steel 760-553-3444
**YOUR VISION REALIZED WITH
OUR STEEL BUILDINGS!**

*It's for the
Kids...*



The next Quail Meeting will be
January 21 at 10:00 am in the
MCA Auditorium

The program topic to be
announced in the next issue of the
Community News

*We are devoted to raising monies to be
awarded to qualifying students.*



LOCAL CHURCH NEWS

MEADVIEW CONNECTION

Meadview Community Church

540 Hualapai Creek Dr
(928) 218-1563

Sunday School 9:30 AM
Sunday Worship 10:45 AM
Sunday Fellowship Time 12:00 PM

Bible Study –Every other
Wednesday. 5:00 PM
Check our website for dates.

Bingo every Friday at MCA
1:00 PM

(928) 218-1563

Check out our website for current
events at:
meadviewcommunitychurch.com

Meadview Baptist Church

Pastor Curtis O’Brien

1035 Meadview Blvd.

(928) 564-5305

MBCPastor2112018@gmail.com

www.meadviewbaptist.com

WEEKLY SCHEDULE:

Sunday - 8:30 AM—Praise Team Practice
9:30 AM - Sunday School
11:00 AM - Worship Service

Thursday - 3:30 PM - Bible Study/Prayer
Meeting

Saturday-3:30 PM—Praise Team Practice

Saturday - 9:00 AM Men’s Breakfast is
held the first Saturday of every month. All
men are welcome.

ONE MORE THANK YOU!!

. . . To Mike and Darlene Post for
leading the 2024 Christmas Caravan.
The Posts led a tour of 30 cars to view
homes that were decorated with beauti-
ful lighting displays.

Also, thank you to the MCA for the use
of the auditorium as a gathering place
and where we served
“Snacks to Go”.

ANTHONY’S SPORTS CORNER

The Arizona Cardinals lost a close game against the LA Rams last Saturday 13-9. That loss knocked us out of the playoffs. The Cardinals will play the 49ers this coming Sunday. It has not been the season I wanted it to be, but we won more games this year than last season.

College football playoffs have been great so far. The playoffs started with 12 teams and is now down to eight teams. Penn State beat Boise State 31-14 and Texas beat Arizona State in double overtime 39-31. That was probably one of the best games I've ever seen in college football. Ohio State beat the #1 team, the Oregon Ducks 41-21. The Georgia/Notre Dame has been postponed until Thursday, January 2nd. Going into the Final Four, Texas will play against Ohio State on Friday, January 3. Penn State will play the winner of the Notre Dame/Georgia game on Thursday, January 9. The winners of both games will play against each other on January 20 for the National Championship.

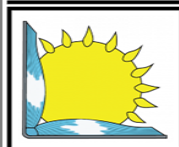
The Phoenix Suns are in 11th place in the Western Conference with a record of 15-17.

The Vegas Golden Knights are in 1st place in the Pacific Division with a record of 25-9. If they can keep winning, they may bring the Stanley Cup back to the desert.

In Men’s College Basketball, University of Tennessee is ranked #1 with a record of 12-0. Auburn University is coming in at #2 with a record of 11-1. Iowa State rounds it off at #3 with a record of 10-1.

In Women’s College Basketball, UCLA is ranked #1 with a record of 13-0. South Carolina is #2 with a record of 12-1.

As always, you can watch your favorite sporting events at The Fisherman's Landing Bar. Until the next issue, keep watching sports, my friends.



MOHAVE COUNTY LIBRARY DISTRICT

Meadview Community Library
149 East Meadview Blvd.
Meadview, AZ 86444
(928) 564-2535
www.mohavecountylibrary.us

Connect with us @



Good day, Meadview Community. This month we are excited to take a closer look at American author Michael Connelly. Connelly was born in Philadelphia and later moved to Florida and attended the University of Florida where he decided to become an author after being inspired by the works of Raymond Chandler. Later he would land a job as a writer for The *Los Angeles Times*. He now has thirty-nine bestselling novels and 85 million copies of his book sold worldwide. Many of his books have been made into movies such as 1998 *Blood Work* and 2011 *The Lincoln Lawyer*. If you would like to check out his collection of work, come by the library. We have several of his books to choose from.

The Friends of the Library will meet on January 18 at 3:00 pm. Everyone is welcome to join us.

The library offers internet, printing and fax services.

The library is open Tuesday-Thursday-Saturday 10am-3pm.

Community Library Representative: Julia Kolvenbach

iDea DEPOT

☎ (928) 328-8811
✉ edie@idea-depot.net
330 E Meadview Blvd
Suite B
Meadview, Arizona

Graphic Design
Printing
Laminating
Signs
Posters
Custom Mugs
Vinyl Applications
Laser Engraving
So Much More...



BoatHouse Café & Grille

**Fridays
& Saturdays
8AM until 9PM**

Open 7 Days

**Sunday - Thursday
8AM until 8PM**



928-328-8850
30185 N Escalante Blvd

OUTPOST 86444

Hours of Operation

Monday - Friday 11:00 am 'til 6 pm
Saturday 11 am 'til 4 pm

250 E Pueblo Drive
(928) 377-5477



THE WAFFLE CONE

FROZEN CUSTARD & MORE

Did you know that you can do all
of this right here in Meadview?

- **FRESH** Deli items
- **Party Platters**
- **Pizza Parties**
- **Private Events**
- **Birthday Parties**



Call to explore your options today!

928-328-8818

Closed Monday & Tuesday
Open Wednesday through Sunday
from 11AM until 6PM

300 East Meadview Boulevard . Suite F & G
Meadview, Arizona 86444



MEADVIEW MARKET

**WEDNESDAY THRU MONDAY
11 AM - 6 PM**

Grocery List

- MILK
- FRESH FRUIT
- BREAD
- EGGS
- BUTTER
- BAGGED ICE
- FRESH VEGGIES



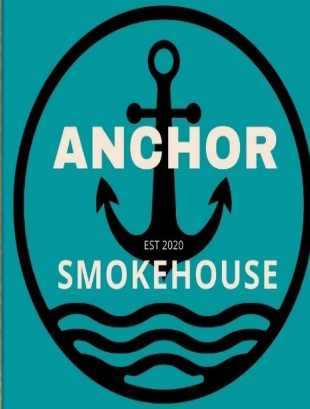
30725 N Bright Angel Dr / \$160,000 / MLS #020470



Cute & comfortable 3 bed/2 bath fully furnished home
 16 x 16 detached workshop with built-in shelves
 Sits on 1.33 acres with horseshoe driveway
 Enjoy the best views in town from large raised deck!



**Michelene Provo/Designated Broker
 Realtor / Owner**
 Professional service with
 excellent communication!
 (928) 716-1472
mich@cactuswrenrealty.net



TUESDAY THRU
 SUNDAY
 12:00-7:00PM



**STEAMTABLE
 SPECIALS**

CHECK US OUT ON FACEBOOK
 @Anchorsmokehouse2019

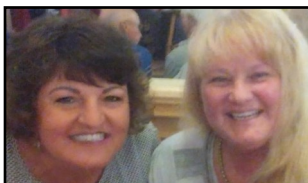
Meadview, Arizona
 165 Bradley Bay
 928-564-2880 86444

Canyon Cutz
 30125 Escalante Dr Meadview, AZ 86444



Vikilee Brooksby
 (435) 673-1593
 Monday, Wednesday, Friday
 11:00 am--3:00 pm

Eva Strahl
 (928) 377-2646
 Tuesday, Thursday, Saturday
 9:00 am-1:00 pm



Eva and Vikilee
 wish all of you a beautiful holiday season.

Please text or call for an appointment.
 Specializing in Men's and Women's Haircuts
 Color, Perms, Facial waxing, Pedicures
 Gift Certificates Available



We have games and tournaments!!

- MONDAY Shuffleboard Tournament 4:00 PM
- TUESDAY Quick and Dead Tournament 5:00 PM
- WEDNESDAY Shuffleboard Tournament 11 AM
- THURSDAY 9 Ball Double Elimination Pool Tournament 5:00 PM
- FRIDAY 8 Ball Tournament 5:00 PM
- SUNDAY MJO Jazz Group 4:30—6:30 pm

Please come out and join us
 Thanks for your support.



290 Pueblo · Meadview, AZ
 (928) 564-2100

FOR SALE

2 COMMERCIAL LOTS

690 and 720 Meadview Boulevard
 343-21-072 and 343-21-073
 Just east of Escalante Boulevard

Have water meter and electric is close by

Recently graded level, ready for your development
 Great for storage yard or other use.

Asking \$50,000 for both, terms available
 \$10,000 down, \$750 per month including 5% interest
 All due in 3 years. . .Let's talk.

Ron Bernstein
 (702) 278-6300
 pepparts11@aol.com
 Broker/owner



**FINE SEASONING BLENDS
 ULTRA VIOLET PRINTING
 CUSTOM & STOCK**

GREAT! BOLD FLAVORS
**TRY OUR FLAVOR-PACKED SEASONING BLENDS.
 TRANSFORM ANY MEAL WITH ON ONE OF OUR
 12 UNIQUE, ALL NATURAL BLENDS.
 VISIT US AT THE MEADVIEW FARMERS MARKET
 TO SAMPLE THE BOLD FLAVORS.**

**OUR PRINTED PRODUCTS MAKE GREAT GIFTS.
 PRINTED WITH UV INKS PROVIDING DURABLE
 VIVID IMAGES ON A VARIETY OF MATERIALS**

CONTACT US ABOUT PRINTING YOUR
 PERSONALIZED IMAGES

AVAILABLE AT THE MEADVIEW CHAMBER GIFT GALLERY

WWW.TEHACHAPI.COM
 ROBISON@TEHACHAPI.COM

Gift Gallery

In the

Meadview Area Chamber of Commerce

330 E. Meadview Blvd., Suite D Meadview, AZ 86444

(928) 564-2425

Hand-Crafted Gifts, Souvenirs, Meadview Memorabilia

Designer Dolls	Woodworking
Baskets and car coasters	Flagstone-topped tables
Scarfs and beanies	Handcrafted soaps and shampoos
Aprons, matching pot-holder and towel sets	Tufted quilts and chair cushions
Scrubbies for the kitchen and shower	Hats and scarfs
Gift cards	Hat bands
Home Décor	Meadview T-Shirts
Seasonal Décor	Phonebooks, maps and area info
Seasonings and rubs	Joshua Tree Forest jewelry
Handcrafted jewelry	Lots more!!
Handbags and totes	

Hours:

Wednesday-Friday: 10:00 am – 3:00 pm

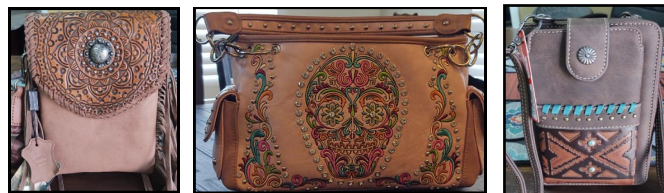
Saturday: 9:00 am – 3:00 pm

Sunday: 11:00 am-3:00 pm



Metal and More Yard Art and Home Décor

Hot New Items!



These beautiful handbags feature a Concealed Carry Pocket

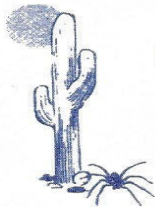
**More styles available while supplies last
 Open Fridays and Saturdays
 8:00 am—5:00 pm
 Open Sundays 8:00 am-2:00 pm
 115 Pueblo Drive**



**27070 N. Pierce Ferry Rd
928-564-2855**

- ASCE CERTIFIED
- A/C
- TUNE UPS & BRAKES
- RV STORAGE
- BOAT STORAGE
- TOWING

**BLUE MOON PEST CONTROL
LLC #5541**



Out of Kingman, AZ is interested in doing your pest control. We will be coming to Meadview on the 1st Tuesday of each month. If you would like service please call our office at:

928-692-9417
Please ask for Cheryl



Affordable and Dependable
Carpet Cleaning Service



**RotoVac
Professional
Cleaning**

**FREE
Estimates**

**WAKE UP
WITH
A SMILE**



"A Superior Hot Water
Extraction Method"
RotoVac

- *Carpet Cleaning
- *Schotchgard
- *Stain Removal
- *Pet Odor Control
- *Furniture Cleaning
- *Area Rugs
- *Auto, Boats & RVS
- *Water Damage

Anthony Carter

**928-564-2668
714-290-4503**

Email: anthonycarter0425@yahoo.com

**SHOP LOCAL.
EAT LOCAL.
SPEND LOCAL**



SNACKS AND FOOD

**COCKTAIL LOUNGE • LIQUOR STORE • BAIT & TACKLE
290 PUEBLO • MEADVIEW**

Meadview RV Park & Cozy Cabins



The closest facility to the
Grand Canyon Skywalk with Spectacular Sunset Views!

LOW MONTHLY RATES...

Year-Round Rates w/Full Hook-ups 30 & 50 AMP
Cabins w/Full Kitchenette starting at \$75.00 a night

FREE Wireless Internet – Pet Friendly

24 Hour Security Video Surveillance for your Comfort and Security

New Open and Covered Storage Areas for Boats & RV

5'x 8' Storage Lockers / 8'x 20' Cargo Container

Propane, Bagged Ice, ATM, and Coin Laundry for your convenience...



www.rv-park.com rvpark@citilink.com

* YEAR-ROUND RENTAL RATES for 30/50amp sites:

Monthly: \$280.00 + Elec.

RATES ARE FOR 2 PEOPLE - \$4.00 additional person(s)

*STORAGE RATES for daily/monthly (upon availability):

Covered Storage: \$3.00 / \$75.00

RV & Boat Open Storage: \$2.00 / \$50.00

5'x 8' Storage Locker \$2.00 / \$50.00

8'X 20' Cargo Container \$3.00 / \$75.00

*PRICES LISTED ABOVE DO NOT INCLUDE APPLICABLE TAXES

**28100 N. Pierce Ferry Road
Meadview, AZ 86444
(928) 564-2662**

LOCAL ORGANIZATIONS

If changes need to be made to your notice, please send an email to COM at comads@comaz.info

AL-ANON
 Are you troubled by someone's drinking?
 Call 564-3467 or 564-2667

FRIENDS OF THE LIBRARY
 Meets on the third Saturday of odd numbered months at 3:00 pm in the library.
 564-2535

BOOK DISCUSSION GROUP
 Meets on the third Saturday of even numbered months at 3:00 pm in the library
 564-2535

COMMUNITY ORGANIZATION OF MEADVIEW (COM)
 Meets at 10:00 am on the first Thursday of each month at the MCA Sept-May. Presents monthly programs of general interest to the community and publishes the Community News. Please visit the COM Website: www.comaz.info No membership required. (928) 564-2187.

D.A.R.
 The Daughters of the American Revolution meet the 2nd Saturday every month in Kingman at the College Park Community Church September through May.



 For God & Country Veterans Advocacy
 928-564-2666


RED, WHITE AND BLUE QUILTERS OF MEADVIEW
 We are a non-profit group that makes quilts for Meadview are veterans.
 We meet the 3rd and 4th Thursday each month at Meadview Community Church at 10:00 am.
 For more information, please call Carolyn at (928) 715-7232

MEADVIEW BAPTIST CHURCH
www.meadviewbaptist.com
 Sunday School 9:30 am
 Sunday Worship 11:00 am
 Thurs Bible Study/Prayer Mtg 3:30pm
 (928) 564-5305

MEADVIEW COMMUNITY CHURCH
 540 Hualapai Creek Dr. (928) 218-1563
 Sunday School 9:30 am
 Sunday Worship 10:45 am
 Sunday Fellowship Time 12:00 pm
 Bible Study--Every other Wed. 5:00 pm
 Check our website for dates
 Bingo every Friday at the MCA at 1:00 pm
<https://meadviewcommunitychurch.com>

OUR LADY OF THE DESERT MISSION
 Dolan Springs, 928-767-3397
 Rev. Victor Yakubu, Parochial Administrator
 Rev. Julius Kayiwa, Parochial Vicar
 Saturday Mass 4:00 PM English
 Sunday Mass 10:00 AM Spanish

THE CHURCH OF JESUS CHRIST OF LATTER DAY SAINTS
 Meets every Sunday from 10:00 am to 12:00 noon.
 16375 Pierce Ferry Road
 Dolan Springs, AZ
 (928) 737-3100

MEADVIEW QUAIL
 Meets on 3rd Tuesday of each month at 10:00 am at the MCA (except for June, July and Aug.) 

MEADVIEW AREA CHAMBER OF COMMERCE
 Meets on the second Tuesday of the month at 5:30 pm in the Barn. Visit website for more information: 564-2425

Friends of AZ Joshua Tree Forest
 Contact us through our website: arizonajoshuatreeforest.org
 Or email us at: arizonajoshatreeforest@gmail.com

NEIGHBORHOOD WATCH
 Meet on the 4th Saturday of odd numbered months at 10 am in the MCA. .

VETERANS OFF ROAD RIDERS
 Meet the last Saturday of each month at 9:00 am at the VFW
 For more information, call the VFW

MCA NEWS
Busy Hands
 Every Wednesday
 10:30 - 6:00 pm
 Come for a while or stay the whole time

MCA MEMBER MEETING
 Quarterly 2nd Saturday
 9:00 am at the MCA.
 All members urged to attend.
Daily Facility Hours
 8:00 am—9:00 pm
Game Nights
Every Wednesday
 From 6:00 pm—8:30 pm

Office Hours
 Tuesday-Friday: 9:00 am-4:00 pm
 Saturday 9:00 am—1:00 pm
 Closed Sunday and Monday
564-2313

EXPLORERS
 The Explorers schedule hikes and day trips of places of interest throughout Mohave County. Follow the Explorer's activities on Facebook at Meadview Explorers.

BINGO
 Fridays at 1:00 pm.
 The doors will open at 12:00 P.M.
 We are always looking for volunteers.
 Please call Cindy at (909) 659-6618

MEADVIEW RIDGERIDERS
 Meet on the first Saturday of the month at 8:30 am in the MCA with a ride following the meeting. Call (406) 431-4616 for more information
<https://www.facebook.com/MeadviewRidgeRiders/>

FARMER'S MARKET
 1st and 3rd Saturday
 9:00 am—Noon
 At the Meadview Marketplace

If the information in your notice changes, please send corrections or changes to comads@outlook.com



KINGMAN REGIONAL MEDICAL CENTER

Your Partner for Better Health

As the largest healthcare provider in northwest Arizona, we offer a full range of services to meet the health and wellness needs of our vibrant, growing community. We offer services from essential primary and preventative care—to sophisticated medical imaging and diagnostic capabilities—to advanced treatments in cardiac care, wound care, and cancer care—to progressive rehabilitation and pain management therapies.



Medical Directory

Audiology

KRMC Speech & Hearing Specialists 681-8717

Balance Therapy

KRMC Dizziness & Balance Center.. 681-8717

Cancer Care

KRMC WL Nugent Cancer Center . 692-4665

Cardiovascular Care

Kingman Cardiovascular Associates 681-8724

Chiropractic Care

Kingman Orthopedics 263-3516

Disease Management

KRMC Disease Management Clinic .. 681-8738

Gastroenterology

High Desert Gastroenterology.... 681-8715

General Surgery

Hillcrest Surgical Associates 681-3535
KRMC Pre-Operative Clinic 681-8728
Mohave Surgical Specialists 681-8720

Home Health

KRMC Home Health 757-0630

Hospice

KRMC Hospice Services 692-4680
KRMC Joan & Diana
Hospice Home 681-8710

Medical Imaging

KRMC Imaging Center 692-2727

Laboratory Services

KRMC Laboratory 692-2727

Obstetrics/Gynecology

Kingman OB/GYN Associates 681-8705

Orthopedic Care

Kingman Orthopedics 681-8693

Pain Management

KRMC Pain Management 681-8570

Pediatrics

Joshua Tree Pediatrics 681-8706

Physical Fitness

Del E. Webb Wellness & Rehabilitation Center 692-4600

Physical Therapy & Rehabilitation

KRMC Acute (Inpatient) Rehabilitation 263-5688
KRMC Outpatient Therapy..... 263-4630

Physiatry

KRMC Physiatry..... 681-8732

Primary Care

Golden Valley Medical Center ... 681-8500
KRMC Family Practice
Residency Clinic 681-8701
KRMC Primary Care 681-8530
Mountain Shadow Family Medicine .. 681-8530

Pulmonary Care

Kingman Pulmonary Associates ... 757-3133
KRMC Lung Health Program 681-8736

Sleep Disorders

KRMC Sleep Disorders Center 692-4144

Speech Therapy

KRMC Speech & Hearing Specialists 681-8717

Sports Medicine

Kingman Orthopedics 681-8693

Thoracic Surgery

Kingman Thoracic Surgery 681-8520

Urgent Care

KRMC Urgent Care 753-3303

Urology

Kingman Urology 681-8686

Vein Center

High Desert Vein Center Kingman .. 681-8755

Wound Care

Kingman Wound Healing and Hyperbaric Center 681-8555

Prevention | Diagnosis | Treatment | Recovery

www.azkrmc.com