

Community News of Meadview and Lake Mead City

SPONSORED BY
THE COMMUNITY ORGANIZATION OF MEADVIEW

online at <www.comaz.info>

Adrienne O'Keeffe-Editor
Jonathan Kiser--Assistant Editor

JANUARY 31, 2025



SPOTLIGHT ON MOHAVE COUNTY ELECTED OFFICIALS

Did you know that Mohave county is the 5th largest county in the US by area? It is also 5th in Arizona by population, but not even in the top 100 in the US.

In our last issue, we gave information about the elected officials who will represent District 4 and LD 30 in legislation. In this issue, we are going to feature the officials who have been elected to do the task of running Mohave County. The elected officials in Mohave County that Meadview area residents are most likely to interact with are:

District 4 Supervisor Don Martin: The Board of Supervisors is the governing body of Mohave County. Duties are both legislative and executive. The Board is responsible for the overall management of the county government operations. Meetings are on the 1st and 3rd Monday of each month and are open to the public. Meadview is located in District 4 with Don Martin elected to a 4-year term as supervisor. Don can be contacted by calling (928) 753-8618.

Assessor: Jeanne Kentch. The function of the Assessor's Office is to locate, identify and set full cash value on all taxable county property. The Assessor's Office works very closely with the County Treasurer and County Recorder. They work with various programs designed to reduce or freeze valuations and protect ownership. Some of these programs are: Senior Valuation Freeze, Exemptions, Tax Deferral, Assessor Address Protection Program (AAPP). If you are interested in any of these programs, contact the Assessor's office at (928) 753-0703 to see if you qualify to participate.

County Recorder: Lydia Durst. The Recorder's Office serves residents of Mohave County for recording documents. They also work closely with the Elections Department for voter registration and early ballot functions. The office maintains public records involving many transactions such as real estate, mining, personal property, mortgages, tax liens, subdivision plats and military discharges. For information on recording deeds, please call (928) 753-0701.

County Treasurer: SueAnn Mello. The Treasurer's Office collects taxes and revenue needed to operate the county. They work with all other agencies in creating and maintaining the county budget. Drop boxes are available for making payments by check. Do not deposit cash in drop boxes. If you have any questions about the Treasurer's Office, call (928) 753-0737.

All of these departments are located in the Mohave County Building located at 700 W. Beale Street, Kingman.

County Sherrif: Doug Schuster. The function of the Sherrif's Office is to enhance public safety and ensure a quality of life, safety and welfare for the citizens of Mohave County. Programs that are a part of the Sherrif's Office are: Animal Control, Fingerprint Services, K-9 Deputies, Take Me Home and maintaining the County Jail and Volunteer Posse. Report emergencies by calling 911. For non-emergency issues, call (928) 753-0753.

The Sheriff's Department is located at 600 W. Beale Street, Kingman. The mailing address is P. O. 1191.



COM FEBRUARY 6 MEETING

COM is pleased to announce our featured speaker for the February COM Meeting will be Mohave County Sheriff Schuster. The Sheriff will also bring quite a few of his staff members with him. Sheriff Schuster always puts on an informative and entertaining program. Be sure to mark your calendars. You don't want to miss this one. The meeting starts at 10:00 am with refreshments served at 9:45.

IMPORTANT DATES AND EVENTS

February 1	Farmer's Market in the Meadview Marketplace from 9:00—Noon
February 5	Busy Hands—MCA from 10:30 am —6:00 pm
February 5	Game Night in the MCA from 6:00pm-8:30pm
February 6	COM Meeting in the MCA Auditorium at 10:00 am. Sherrif Schuster will be our speaker.
February 9	Super Bowl LIX in New Orleans. Kickoff is at 4:30 pm Arizona Time.

IN THIS ISSUE...

Community Event Calendar February	Page 2
COM February 6 Meeting	Page 3
County Corner: Jeanne Kentch, Assessor	Page 4
Super Bowl LIX Facts and Trivia	Page 6
Meadview Connection—Church News	Page 7
Anthony's Sports Corner	Page 7
Library News	Page 7

MEADVIEW COMMUNITY EVENT CALENDAR FOR FEBRUARY 2025

- February 1** Farmer's Market in the Meadview Marketplace from 9:00—Noon
- February 2** Groundhog Day Will Meadview Milton see his shadow?
- February 5** Mohave County Mobile Healthcare Unit — MCA parking lot from 9:00—noon
- February 5** Busy Hands—MCA Auditorium from 10:30 am —6:00 pm
- February 5** Game Night in the MCA Auditorium from 6:00 pm - 8:30 pm
- February 6** COM Meeting in the MCA Auditorium at 10:00 am. Sherriff Schuster will be our speaker.
- February 7** Bingo in the MCA Auditorium. Doors open at 12:00 and games begin at 1:00 pm
- February 9** Super Bowl LIX in New Orleans. Kickoff is at 4:30 pm Arizona Time.
- February 11** St. Mary's Food Distribution in the VFW parking lot at 10:00 am
- February 11** Meadview Area Chamber of Commerce Meeting at the Barn at 5:30 pm
- February 12** Busy Hands—MCA Auditorium from 10:30 am —6:00 pm
- February 12** Game Night in the MCA Auditorium from 6:00 pm - 8:30 pm
- February 14** Bingo in the MCA Auditorium. Doors open at 12:00 and games begin at 1:00 pm
- February 14** Valentine's Day
- February 15** Farmer's Market in the Meadview Marketplace from 9:00—Noon
- February 17** Presidents Day, a Federal Holiday. Banks, post offices, schools and government offices closed.
- February 18** Quail Meeting in the MCA Auditorium at 10:00 am
- February 19** Busy Hands—MCA Auditorium from 10:30 am —6:00 pm
- February 19** Game Night in the MCA Auditorium from 6:00 pm - 8:30 pm
- February 20** LMRFD Fire Board Meeting
- February 21** Bingo in the MCA Auditorium. Doors open at 12:00 and games begin at 1:00 pm
- February 26** Mohave County Mobile Healthcare Unit — MCA parking lot from 9:00—noon
- February 26** Busy Hands—MCA Auditorium from 10:30 am —6:00 pm
- February 26** Game Night in the MCA Auditorium from 6:00 pm - 8:30 pm
- February 28** Bingo in the MCA Auditorium. Doors open at 12:00 and games begin at 1:00 pm

HANDYMAN SERVICE

Carpentry, Electrical, Plumbing,
RV Service, Decks, Bathrooms,
Kitchens, Painting,
Sheetrock, etc.

(928) 830-4079

Senior Discount

Joe Cherry

COMMUNITY NEWS

Published every other Friday

Fees for ads: 3" ad: \$6.00 per issue,
1/4 page: \$8.00 per issue, \$80/10 issues, \$160/20 issues
Half page: \$16.00 per issue, \$160/10 issues. \$320/20 issues
Full page: \$32.00 per issue, \$320/10 issues, \$640/20 issues
Business card ad/\$6.00 per issue

Please put ads with the payment into the Community News drop box at the Post Office or mail to P.O. Box 31, Meadview, **Make checks payable to "COM"**. Ads can be emailed to comads@comaz.info and payment can be put in the drop box at the post office.

The next issue date is February 14, 2025 The deadline is February 8, 2025 at 4:00 pm.

The opinions expressed in this publication are those of the authors submitting various articles and do not reflect the options of COM, the board or its members. . COM reserves the right to refuse to accept any advertising that may be illegal or not in compliance with our platform.

JOIN THE **C**ommunity **O**rganization of **M**eadview

**FEBRUARY 6, 2025 COM Meeting
At 10:00 am**



Sheriff Doug Schuster will update us on happenings in the Mohave County Sheriff's Department



Refreshments served at 9:45



**IN THE MCA AUDITORIUM
AT 247 E MEADVIEW BLVD**



MOHAVE COUNTY CORNER

BY Jeanne Kentch, County Assessor

Happy New Year Mohave County!

I am thrilled to be writing to you again after this last election season.

I hope your holidays were perfect, magical and relaxing.

We have so many great things to share with you today.

First off it is now the time of the year to apply for many of our Assessor programs.

Widow/Widower/100% Disabled and Veterans exemption program applications must be submitted no later than **February 28, 2025**. If qualified, these exemption opportunities can save you hundreds of dollars on your next tax bill.

Our Senior Protection Program, or what we call the "Senior Freeze" program will freeze your values for as long as you keep applying. Like our exemption programs, you must qualify, but if successful it will save you future tax dollars by "freezing" your property values. This program is open to apply until September 2025.

Another great program our office has is our very successful Assessor's Address Protection Program (AAPP). This program was created by the Mohave County Assessor's office due to the deed fraud our country is experiencing. Any property owner can sign up for our AAPP program by visiting one of our three offices, we will notarize your signature (s), and for a small \$50 fee per parcel you will have an additional level of security knowing that your property will not be transferred without your knowledge. Last month The Mohave Assessors office was thrilled and honored to receive a state "Summit Award" for our AAPP program, many other Assessors across the state are now starting to implement this program or something similar.

Last month I was also honored to be appointed on the Arizona Association of County Officers (AACO) Board. This board lobbies for bills submitted to the Legislature for the entire legislative season. I should be very busy this year due to the 10 bills our state Assessors are attempting and the many other bills that will reach my desk from county officers around the state. As a board member I will follow many bills but as your Assessor I will watch diligently on a Land Value bill and even a Classification bill that can help with short term rental concerns. If you have any questions as to what AACo will be lobbying for this year, please contact me: jeanne.kentch@mohave.gov.

2025 will be an amazing and productive year. The projected growth in Mohave County is over the top exciting. I am looking forward to working with our state Legislatures, my fellow Assessors and all of you.

For help with the above programs visit one of our offices today:

Kingman Office

700 W. Beal St
Kingman, AZ 86402
928-753-0703

Lake Havasu City Office

2001 College Drive , Ste 93
Lake Havasu City, AZ 86404
928-453-0702

Bullhead City Office

1130 Hancock Rd
Bullhead City, AZ 86442
928-758-0701

FISHERMAN'S LANDING'S Bar



Sunday, February 9, 2025

Kick off at 4:30 pm

Volume will be on all four big screen TV 's

Snacks will be provided



290 Pueblo • Meadview, AZ
(928) 564-2100



ARIZONA TRANCE-FORMATIONS

"Change, at the Speed of Thought"

Imagine how good you'll feel making positive changes in your life!

The Arizona Trance-Formation Center located in Meadview will support your positive changes to act, think and feel like the person you determine to be! We create specialized programs designed to help you learn how to relax, reduce stress and make the necessary changes in a positive way. We utilize advanced methods that are known to create lasting changes in people including Hypnosis, NLP, various Shamanic & Psychological modalities to enhance your experience. Since 1985 Don has been helping create positive changes. All consultations are by appointment only via zoom.



Let's Chat

**Don Spencer
928-564-5857
Meadview**

Here Are Areas We Work With

Discovering Your Life's Purpose
Reduce Stress & Anxiety
Gain Confidence & Motivation
Smoking Cessation
Weight Release



Relieve Depression
Inner Child Connection
Relationship Challenges
Conquer PTSD
Control Pain



End of Life Transitions
Overcome Addictions
Eliminate Fears & Phobias
SleepNow Overcome Insomnia
Nutritional Wellness

www.SleepNow.com

NEWLY FORMING IN MEADVIEW The "Wholistic Guild"

(Guild: an association of persons for the furtherance of a similar purpose—in this case, HEALTHINESS!!)

Do you see or feel the need within you to Encourage and Support Preventive Wellness in our community??

Do you have a background in Natural Health and Healing methods??

Would you be interested in Sharing Your Knowledge via Workshops or Classes?

Are you open to actively Sharing your Skills and Training with those in need??

If so, please consider joining our Guild!!
We will be creating a Directory of Subjects and Services prior to our kick-off event:

MEADVIEWS FIRST ANNUAL
WHOLISTIC HEALTH FAIR
MARCH 22, 2025
10:00 AM-4:00 PM at the MCA

Questions ??
Call Judyrose at (970) 234-4776



KINGMAN PREMIER PROPERTIES

OF MEADVIEW

Dawn Brannies, Designated Broker

HISTORIC MEADVIEW TERRACE OPPORTUNITY



Ideal Location for Charm, Comfort and Convenience
Short Walk to City Center for All the Amenities
Move-In Ready 2 Bedroom Option Home
Garage, Carport and Raised Boat Port

Always Ready to help you List and Sell!

Jonathan Kiser, Manager
Kat Howard, Sales ♦ Darlene Post, Sales
Christina Purkiss, Sales

(928) 564-2222 ★ 335 E. Pueblo Drive

SUPER BOWL LIX FACTS AND TRIVIA

The Super Bowl is the most watched game of the sports calendar. Every year, new records are expected to be set. The Conference Championship games already broke some notable records. The AFC Championship game between the Kansas City Chiefs and the Buffalo Bills was watched by a record audience of 57.4 million viewers. On the NFC side, the Philadelphia Eagles scored the most points ever in a conference title game.

Super Bowl LIX will be a rematch of Super Bowl LVII from two years ago when the Chiefs beat the Eagles 38-35.

Will this be a "3-peat"? No team has ever won three Super Bowls in a row. In fact, no team that won two straight Super Bowls ever made it to the Super Bowl in the 3rd season. The Chiefs have already made some history and they do have a shot to win three Super Bowls in a row.

This is the 11th time New Orleans is the host city and will be tied with Miami for hosting the most Super Bowls. Super Bowl LX will be in Atlanta.

The Eagles are the designated home team. They will wear green jerseys with white pants. The Chiefs will wear white jerseys with red pants. These are the same colors worn in Super Bowl LVII.

SPECIAL OFFER
25%
Ends soon!!

Glaser Steel 760-553-3444
**YOUR VISION REALIZED WITH
OUR STEEL BUILDINGS!**

LOCAL CHURCH NEWS

MEADVIEW CONNECTION

Meadview Community Church

540 Hualapai Creek Dr
(928) 218-1563

Sunday School 9:30 AM
Sunday Worship 10:45 AM
Sunday Fellowship Time 12:00 PM

Bible Study –Every other
Wednesday at 5:00 PM
Check our website for dates.

Bingo is every Friday at the MCA
at 1:00 PM
Doors open at 12:00
(928) 218-1563

Check out our website for current
events at:
meadviewcommunitychurch.com

**Meadview Baptist Church
Pastor Curtis O'Brien
1035 Meadview Blvd.**

(928) 564-5305

MBCPastor2112018@gmail.com
www.meadviewbaptist.com

WEEKLY SCHEDULE:

Sunday - 8:30 AM—Praise Team Practice

9:30 AM - Sunday School
11:00 AM - Worship Service

Thursday - 3:30 PM - Bible Study/
Prayer Meeting

Saturday-3:30 PM—Praise Team Practice

Saturday - 9:00 AM Men's Breakfast is held the first Saturday of every month. All men are welcome.

February 23: Wade Hammond Concert at 11:00 am in the Meadview Baptist Church.

ANTHONY'S SPORTS CORNER

The NFC and AFC Conference Championship games were played this past Sunday. Both games were great. The Philadelphia Eagles really put a pounding on Washington Commanders with the score of 55-23. The Eagles got six rushing touchdowns in the game, setting a new record.

The Kansas City Chiefs / Buffalo Bills game went right down to the wire. The Chiefs won it 32-29. The Super Bowl will be in two weeks on February 9 with Kansas City Chiefs vs Philadelphia Eagles. Kick-off time for the game will be 4:30 pm Arizona time. You will be able to watch the game at The Fisherman's Landing Bar. Ask me about the Super Bowl pools.

The College Football National Championship game between Notre Dame vs Ohio State was a great game. Ohio State beat Notre Dame 34-23. The Notre Dame Coach Marcus Freeman just received The Coach of the Year award in College Football. He absolutely deserved that title.

The Phoenix Suns are in 8th place in the Western Conference with a record of 23-21. They still have a long way before the end of the season and, hopefully they will start winning more games.

The Vegas Golden Knights are still in 1st place in the Pacific Division in the Western Conference with a record of 31-15.

Believe it or not, NASCAR is back racing February 2nd at the Cook Out Clash at the Bowman Grey Stadium in Winston-Salem, North Carolina. On February 16, the Daytona 500 will be at the Daytona International Speedway in Daytona Beach, Florida.

Auburn University is ranked #1 in the Men's College Basketball with a record of 17-1. Duke is coming in at #2 with a 16-2 record. Iowa State is coming in at #3 with a record of 15-2.

In Women's College Basketball, UCLA is still ranked #1 with a record of 17-0. South Carolina is coming is at #2 with a record of 18-1.

As always, you can watch your favorite sporting events at The Fisherman's Landing Bar. Until the next issue, keep watching sports, my friends.



MOHAVE COUNTY LIBRARY DISTRICT

Meadview Community Library
149 East Meadview Blvd.
Meadview, AZ 86444
(928) 564-2535
www.mohavecountylibrary.us

Connect with us @



Good day, Meadview Community! This month we will have a Garden Chime Craft Project in the library on February 13 at 11:00 am. This will be a great way to break up the winter blues and have a cute garden chime for your garden or window. Can you believe there are only seven more Saturdays until Spring? If you would like to join the fun, just come by and sign up. Everyone is welcome.

The Friends of the Library will be hosting Valentine Sweet Treats on February 8 from 10:00 am-1:00 pm. Come down and find something sweet just in time for Valentine's Day.

On February 22 at 3:00 pm, we will be having our bi-monthly book discussion. This group is growing and we always welcome new faces. Come by and ask your Library Representative for details.

**The library offers internet, printing, and fax services.
The library is open Tuesday-Thursday-Saturday 10am-3pm.**

Community Library Representative: Julia Kolvenbach



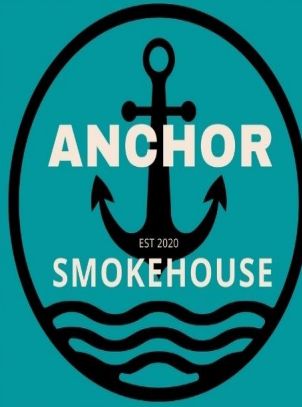
27305 N Rainbow Rd / \$250,000 / MLS #023667



Super clean 2 bed/2 bath home with 24x24 attached garage Relax in the 12x24 breezeway sun-room with French doors Well maintained landscaped property on 1.25 elevated acres Enjoy the best views in town from a covered front deck!



Michelene Provo/Designated Broker Realtor / Owner Professional service with excellent communication! (928) 716-1472



TUESDAY THRU SUNDAY 12:00-7:00PM



STEAMTABLE SPECIALS

CHECK US OUT ON FACEBOOK @Anchorsmokehouse2019

165 Bradley Bay Meadview, Arizona 928-564-2880 86444

Canyon Cutz 30125 Escalante Dr Meadview, AZ 86444

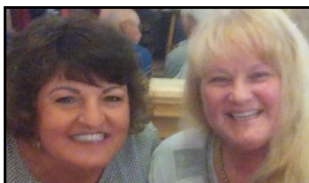


Vikilee Brooksby (435) 673-1593

Monday, Wednesday, Friday 11:00 am--3:00 pm

Eva Strahl (928) 377-2646

Tuesday, Thursday, Saturday 9:00 am-1:00 pm



Please drop by the salon and let us know what we can do to help you feel more alive in 2025.

Please text or call for an appointment. Specializing in Men's and Women's Haircuts Color, Perms, Facial waxing, Pedicures



We have games and tournaments!!

- MONDAY Shuffleboard Tournament 4:00 PM
TUESDAY Quick and Dead Tournament 5:00 PM
WEDNESDAY Shuffleboard Tournament 11 AM
THURSDAY 9 Ball Double Elimination Pool Tournament 5:00 PM
FRIDAY 8 Ball Tournament 5:00 PM
SUNDAY MJO Jazz Group 4:30-6:30 pm

Please come out and join us Thanks for your support.



290 Pueblo Meadview, AZ (928) 564-2100

iDea DEPOT

(928) 328-8811
edie@idea-depot.net
330 E Meadview Blvd
Suite B
Meadview, Arizona

Graphic Design
Printing
Laminating
Signs
Posters
Custom Mugs
Vinyl Applications
Laser Engraving
So Much More...



BoatHouse Café & Grille

**Fridays
& Saturdays
8AM until 9PM**

Open 7 Days

**Sunday - Thursday
8AM until 8PM**



928-328-8850
30185 N Escalante Blvd



THE WAFFLE CONE

FROZEN CUSTARD & MORE

Did you know that you can do all of this right here in Meadview?

- **FRESH** Deli items
- **Party Platters**
- **Pizza Parties**
- **Private Events**
- **Birthday Parties**



Call to explore your options today!

928-328-8818

Closed Monday & Tuesday
Open Wednesday through Sunday
from 11AM until 6PM

300 East Meadview Boulevard . Suite F & G
Meadview, Arizona 86444



MEADVIEW MARKET

**WEDNESDAY THRU MONDAY
11 AM - 6 PM**

Grocery List

- MILK
- FRESH FRUIT
- BREAD
- EGGS
- BUTTER
- BAGGED ICE
- FRESH VEGGIES

OUTPOST 86444

Hours of Operation

Monday - Friday 11:00 am 'til 6 pm
Saturday 11 am 'til 4 pm

250 E Pueblo Drive
(928) 377-5477

FOR SALE

2 COMMERCIAL LOTS

690 and 720 Meadview Boulevard
 343-21-072 and 343-21-073
 Just east of Escalante Boulevard

Have water meter and electric is close by

Recently graded level, ready for your development
 Great for storage yard or other use.

Asking \$50,000 for both, terms available
 \$10,000 down, \$750 per month including 5% interest
 All due in 3 years. . .Let's talk.

Ron Bernstein
 (702) 278-6300
 pepparts11@aol.com
 Broker/owner



**FINE SEASONING BLENDS
 ULTRA VIOLET PRINTING
 CUSTOM & STOCK**

GREAT! BOLD FLAVORS
**TRY OUR FLAVOR-PACKED SEASONING BLENDS.
 TRANSFORM ANY MEAL WITH ON ONE OF OUR
 12 UNIQUE, ALL NATURAL BLENDS.
 VISIT US AT THE MEADVIEW FARMERS MARKET
 TO SAMPLE THE BOLD FLAVORS.**

**OUR PRINTED PRODUCTS MAKE GREAT GIFTS.
 PRINTED WITH UV INKS PROVIDING DURABLE
 VIVID IMAGES ON A VARIETY OF MATERIALS**

CONTACT US ABOUT PRINTING YOUR
 PERSONALIZED IMAGES

AVAILABLE AT THE MEADVIEW CHAMBER GIFT GALLERY

WWW.TEHACHAPI.COM
 ROBISON@TEHACHAPI.COM

Gift Gallery

In the

Meadview Area Chamber of Commerce

330 E. Meadview Blvd., Suite D Meadview, AZ 86444

(928) 564-2425

Hand-Crafted Gifts, Souvenirs, Meadview Memorabilia

Designer Dolls	Woodworking
Baskets and car coasters	Flagstone-topped tables
Scarfs and beanies	Handcrafted soaps and shampoos
Aprons, matching pot-holder and towel sets	Tufted quilts and chair cushions
Scrubbies for the kitchen and shower	Hats and scarfs
Gift cards	Hat bands
Home Décor	Meadview T-Shirts
Seasonal Décor	Phonebooks, maps and area info
Seasonings and rubs	Joshua Tree Forest jewelry
Handcrafted jewelry	Lots more!!
Handbags and totes	

Hours:

Wednesday-Friday: 10:00 am – 3:00 pm

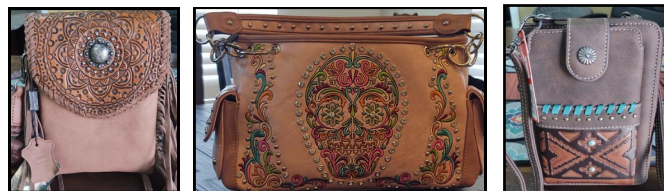
Saturday: 9:00 am – 3:00 pm

Sunday: 11:00 am-3:00 pm



**Metal and More
 Yard Art and Home Décor**

Hot New Items!



These beautiful handbags feature a Concealed Carry Pocket

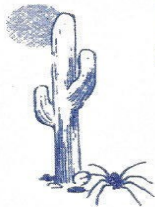
**More styles available while supplies last
 Open Fridays and Saturdays
 8:00 am—5:00 pm
 Open Sundays 8:00 am-2:00 pm
 115 Pueblo Drive**



**27070 N. Pierce Ferry Rd
928-564-2855**

- ASCE CERTIFIED
- A/C
- TUNE UPS & BRAKES
- RV STORAGE
- BOAT STORAGE
- TOWING

**BLUE MOON PEST CONTROL
LLC #5541**



Out of Kingman, AZ is interested in doing your pest control. We will be coming to Meadview on the 1st Tuesday of each month. If you would like service please call our office at:

928-692-9417
Please ask for Cheryl



Affordable and Dependable
Carpet Cleaning Service



**RotoVac
Professional
Cleaning**

**FREE
Estimates**

**WAKE UP
WITH
A SMILE**

"A Superior Hot Water
Extraction Method"
RotoVac

- *Carpet Cleaning
- *Schotchgard
- *Stain Removal
- *Pet Odor Control
- *Furniture Cleaning
- *Area Rugs
- *Auto, Boats & RVS
- *Water Damage

Anthony Carter

**928-564-2668
714-290-4503**

Email: anthonycarter0425@yahoo.com

**SHOP LOCAL.
EAT LOCAL.
SPEND LOCAL**



SNACKS AND FOOD

**COCKTAIL LOUNGE • LIQUOR STORE • BAIT & TACKLE
290 PUEBLO • MEADVIEW**

Meadview RV Park & Cozy Cabins



The closest facility to the
Grand Canyon Skywalk with Spectacular Sunset Views!

LOW MONTHLY RATES...

Year-Round Rates w/Full Hook-ups 30 & 50 AMP
Cabins w/Full Kitchenette starting at \$75.00 a night

FREE Wireless Internet – Pet Friendly

24 Hour Security Video Surveillance for your Comfort and Security

New Open and Covered Storage Areas for Boats & RV

5'x 8' Storage Lockers / 8'x 20' Cargo Container

Propane, Bagged Ice, ATM, and Coin Laundry for your convenience...



www.rv-park.com rvpark@citilink.com

* YEAR-ROUND RENTAL RATES for 30/50amp sites:

Monthly: \$280.00 + Elec.

RATES ARE FOR 2 PEOPLE - \$4.00 additional person(s)

*STORAGE RATES for daily/monthly (upon availability):

Covered Storage: \$3.00 / \$75.00

RV & Boat Open Storage: \$2.00 / \$50.00

5'x 8' Storage Locker \$2.00 / \$50.00

8'X 20' Cargo Container \$3.00 / \$75.00

*PRICES LISTED ABOVE DO NOT INCLUDE APPLICABLE TAXES

28100 N. Pierce Ferry Road

Meadview, AZ 86444

(928) 564-2662

LOCAL ORGANIZATIONS

If changes need to be made to your notice, please send an email to COM at comads@comaz.info

AL-ANON
 Are you troubled by someone's drinking?
 Call 564-3467 or 564-2667

FRIENDS OF THE LIBRARY
 Meets on the third Saturday of odd numbered months at 3:00 pm in the library.
 564-2535

BOOK DISCUSSION GROUP
 Meets on the third Saturday of even numbered months at 3:00 pm in the library
 564-2535

COMMUNITY ORGANIZATION OF MEADVIEW (COM)
 Meets at 10:00 am on the first Thursday of each month at the MCA Sept-May. Presents monthly programs of general interest to the community and publishes the Community News. Please visit the COM Website: www.comaz.info No membership required. (928) 564-2187.

D.A.R.
 The Daughters of the American Revolution meet the 2nd Saturday every month in Kingman at the College Park Community Church September through May.



For God & Country
 Veterans Advocacy
 928-564-2666

RED, WHITE AND BLUE QUILTERS OF MEADVIEW

We are a non-profit group that makes quilts for Meadview are veterans.
 We meet the 3rd and 4th Thursday each month at Meadview Community Church at 10:00 am.
 For more information, please call Carolyn at (928) 715-7232

MEADVIEW BAPTIST CHURCH
www.meadviewbaptist.com
 Sunday School 9:30 am
 Sunday Worship 11:00 am
 Thurs Bible Study/Prayer Mtg 3:30pm
 (928) 564-5305

MEADVIEW COMMUNITY CHURCH
 540 Hualapai Creek Dr. (928) 218-1563
 Sunday School 9:30 am
 Sunday Worship 10:45 am
 Sunday Fellowship Time 12:00 pm
 Bible Study--Every other Wed. 5:00 pm
 Check our website for dates
 Bingo every Friday at the MCA at 1:00 pm
<https://meadviewcommunitychurch.com>

OUR LADY OF THE DESERT MISSION
 Dolan Springs, 928-767-3397
 Rev. Victor Yakubu, Parochial Administrator
 Rev. Julius Kayiwa, Parochial Vicar
 Saturday Mass 4:00 PM English
 Sunday Mass 10:00 AM Spanish

THE CHURCH OF JESUS CHRIST OF LATTER DAY SAINTS
 Meets every Sunday from 10:00 am to 12:00 noon.
 16375 Pierce Ferry Road
 Dolan Springs, AZ
 (928) 737-3100

MEADVIEW QUAIL
 Meets on 3rd Tuesday of each month at 10:00 am at the MCA (except for June, July and Aug.)



MEADVIEW AREA CHAMBER OF COMMERCE
 Meets on the second Tuesday of the month at 5:30 pm in the Barn. Visit website for more information: 564-2425

Friends of AZ Joshua Tree Forest
 Contact us through our website: arizonajoshuatreeforest.org
 Or email us at: arizonajoshatreeforest@gmail.com

NEIGHBORHOOD WATCH
 Meet on the last Saturday of odd numbered months at 10 am in the MCA except the November meeting on Nov. 22.

VETERANS OFF ROAD RIDERS
 Meet the last Saturday of each month at 9:00 am at the VFW
 For more information, call the VFW

MCA NEWS
Busy Hands
 Every Wednesday
 10:30 - 6:00 pm
 Come for a while or stay the whole time

MCA MEMBER MEETING
 Quarterly 2nd Saturday
 9:00 am at the MCA.
 All members urged to attend.
Daily Facility Hours
8:00 am—9:00 pm

Game Nights
Every Wednesday
From 6:00 pm—8:30 pm

Office Hours
Tuesday-Friday: 9:00 am-4:00 pm
Saturday 9:00 am—1:00 pm
Closed Sunday and Monday
564-2313

EXPLORERS
 The Explorers schedule hikes and day trips of places of interest throughout Mohave County. Follow the Explorer's activities on Facebook at Meadview Explorers.

BINGO
 Fridays at 1:00 pm.
 The doors will open at 12:00 P.M.
 We are always looking for volunteers.
 Please call Cindy at (909) 659-6618

MEADVIEW RIDGERIDERS
 Meet on the first Saturday of the month at 8:30 am in the MCA with a ride following the meeting. Call (406) 431-4616 for more information

<https://www.facebook.com/MeadviewRidgeRiders/>

FARMER'S MARKET
 1st and 3rd Saturday
 9:00 am—Noon
 At the Meadview Marketplace

If the information in your notice changes, please send corrections or changes to comads@outlook.com



KINGMAN REGIONAL MEDICAL CENTER

Your Partner for Better Health

As the largest healthcare provider in northwest Arizona, we offer a full range of services to meet the health and wellness needs of our vibrant, growing community. Our services range from essential primary and preventative care to sophisticated medical imaging and diagnostic capabilities, as well as advanced treatments in cardiac care and cancer care. We also provide progressive rehabilitation and pain management therapies.



Medical Directory

Balance Therapy

KRMC Dizziness & Balance Center . . . 681-8732

Cancer Care

KRMC WL Nugent Cancer Center . . . 692-4665

Cardiovascular Care

Kingman Cardiovascular
Associates 681-8724

Chiropractic Care

Kingman Orthopedics 263-3516

Disease Management

KRMC Disease Management Clinic . . 681-8738

Gastroenterology

High Desert Gastroenterology 681-8715

General Surgery

Hillcrest Surgical Associates 681-3535
KRMC Pre-Operative Clinic 681-8728
Mohave Surgical Specialists 681-8720

Home Health

KRMC Home Health 757-0630

Hospice

KRMC Hospice Services 692-4680
KRMC Joan & Diana
Hospice Home 681-8710

Medical Imaging

KRMC Imaging Center 692-2727

Laboratory Services

KRMC Medical Professional Center
Laboratory 263-4600
KRMC Hualapai Mountain Campus
Laboratory 263-3673
KRMC Golden Valley Medical Center
Laboratory 681-8500

Obstetrics/Gynecology

Kingman OB/GYN Associates 681-8705

Orthopedic Care

Kingman Orthopedics 681-8693

Pain Management

KRMC Pain Management 681-8570

Pediatrics

Joshua Tree Pediatrics 681-8706

Physical Fitness

Del E. Webb Wellness &
Rehabilitation Center 692-4600

Physical Therapy & Rehabilitation

KRMC Outpatient Therapy 681-8732

Physiatry

KRMC Physiatry 681-8732

Primary Care

Golden Valley Medical Center 681-8500
KRMC Family Practice
Residency Clinic 681-8701
KRMC Primary Care 681-8530
Mountain Shadow Family Medicine . . 681-8530

Pulmonary Care

Kingman Pulmonary Associates 757-3133
KRMC Lung Health Program 681-8736

Sleep Disorders

KRMC Sleep Disorders Center 692-4144

Speech Therapy

KRMC Speech &
Hearing Specialists 681-8717

Sports Medicine

Kingman Orthopedics 681-8693

Thoracic Surgery

Kingman Thoracic Surgery 681-8520

Urgent Care

KRMC Urgent Care 753-3303

Urology

Kingman Urology 681-8686

Vein Center

High Desert Vein Center Kingman . . 681-8755