

# Community News of Meadview and Lake Mead City

SPONSORED BY  
THE COMMUNITY ORGANIZATION OF MEADVIEW

online at <[www.comaz.info](http://www.comaz.info)>

Adrienne O’Keeffe-Editor  
Jonathan Kiser--Assistant Editor

FEBRUARY 14, 2025

## SPOTLIGHT ON UPCOMING “MEGA” COM MEETINGS



COM is entering into the final stretch of our 2024-2025 meeting sessions with three more regular meetings before we go dark for the summer. However, we have been approached by four different groups requesting to be speakers at these meetings. Because of the importance of the subjects covered, we have decided to add a Town Hall style meeting in addition to our regular monthly meetings so each program will be presented in a separate meeting. These are Mega Meetings because of the importance of the subjects that will be presented by very high profile organizations. We are very proud of the fact that these groups have all reached out to us to request to be scheduled to make the presentations to the community.

**Mega Meeting #1—Wildlife in the Meadview Area: March 6.** The program will be presented by a collaboration of specialists from the National Park Service, University of Nevada Las Vegas, Arizona Game and Fish and Fish and Wildlife Service. The focus of this meeting will be about wildlife in the Meadview Area and Lake Mead National Recreation Area and specifically about the Leopard Frog that is only found in a few places in the United States. One of those places is Grapevine Springs.



**Mega Meeting #2—Living with Dementia presented by WACOG: March 13.** WACOG (Western Arizona Council-Governments) is a governmental non-profit that serves vulnerable populations in Mohave, La Paz and Yuma Counties. They work with many companies to provide care services and assistance for elder adults in the region. They are aware that many of our resident families are struggling with caring for a family member suffering from dementia. There are many services available to Mohave County residents that can assist with the care and financial stress that comes with dementia and they want to make us aware of those services. If you know of a family that may need assistance in this area, please encourage them to come to the meeting on March 13.

**Mega Meeting #3—Follow-up to the NPS Program “More to Mead”:** April 3. Lake Mead National Recreation Area Superintendent Mike Gauthier will return to Meadview with his team for a follow-up on “More to Mead”. Last summer, COM hosted a Town Hall meeting so they could present this proposed program to members of the community. One of the goals of that meeting was to get feedback from residents of activities we would like to have. Since that meeting, they have been working with the ideas collected to come up with plans to implement them. And now they are ready to present those plans to the community.

**Mega Meeting #4—Healthcare Resource Fair presented by the Mohave County Street Team: May 1.** The Street Team is an outreach organization of Mohave County Public Health. They work closely with companies and healthcare professionals to educate residents about services that are available. The Healthcare Resource Fairs are how they bring the information to the communities they visit. This will be their 3rd visit to Meadview.

In January, COM reported having a goal to keep the length of our regular meeting to no longer than 1 1/2 hours. However, because of the importance of the programs to be presented at the remaining meetings, we may not be able to hold to the 1 1/2 hour time limit. We will keep the business portion of the meeting as brief as possible. We also will have time limits on group reports and ask that only new information be presented.

Refreshments will be served at 9:45 am and the meetings will begin promptly at 10:00 am. We anticipate heavy attendance at these meetings and look forward to seeing everyone there.

### IMPORTANT DATES AND EVENTS

<b>February 14</b>	Valentine’s Day
<b>February 15</b>	Farmer’s Market in the Meadview Marketplace 9:00—Noon
<b>February 17</b>	Presidents Day, a Federal Holiday.
<b>February 18</b>	Quail Meeting in the MCA Auditorium 10 am
<b>February 19</b>	Busy Hands—MCA Auditorium 10:30 am-6:00
<b>February 19</b>	Game Night in the MCA Auditorium 6:30-8:30
<b>February 20</b>	LMRFD Fire Board Meeting— MCA 1:00 pm

### IN THIS ISSUE...

Community Event Calendar February	Page 2
County Corner: Jeanne Kentch, Assessor	Page 3
Friends of AZ Joshua Tree Forest	Page 3
Meadview Connection—Church News	Page 5
Anthony’s Sports Corner	Page 5
Meadview History Museum	Page 5
St. Mary’s Food Distribution	Page 5
Presidents Day: Federal Holiday	Page 5

**MEADVIEW COMMUNITY EVENT CALENDAR FOR FEBRUARY 2025**

- February 14** Bingo in the MCA Auditorium. Doors open at 12:00 and games begin at 1:00 pm
- February 14** Valentine's Day
- February 15** Farmer's Market in the Meadview Marketplace from 9:00—Noon
- February 17** Presidents Day, a Federal Holiday. Banks, post offices, schools and government offices will be closed.
- February 18** Quail Meeting in the MCA Auditorium at 10:00 am
- February 19** Busy Hands—MCA Auditorium from 10:30 am —6:00 pm
- February 19** Game Night in the MCA Auditorium from 6:00 pm-8:30pm
- February 20** LMRFD Fire Board Meeting—MCA 1:00 pm
- February 21** Bingo in the MCA Auditorium. Doors open at 12:00 and games begin at 1:00 pm
- February 25** Food Distribution in the VFW parking lot at 10:00 am
- February 26** Mohave Cty Mobile Healthcare—MCA parking lot 9am-12
- February 26** Busy Hands—MCA Auditorium from 10:30 am —6:00 pm
- February 26** Game Night in the MCA Auditorium from 6:00 pm-8:30pm
- February 28** Bingo in the MCA Auditorium. Doors open at 12:00 and games begin at 1:00 pm

**COMMUNITY NEWS****Published every other Friday**

**Fees for ads:** 3" ad: \$6.00 per issue,  
1/4 page: \$8.00 per issue  
Half page: \$16.00 per issue  
Full page: \$32.00 per issue  
Business card ad/\$6.00 per issue

Please put ads with the payment into the Community News drop box at the Post Office or mail to P.O. Box 31, Meadview, **Make checks payable to "COM"**. Ads can be emailed to [comads@comaz.info](mailto:comads@comaz.info) and payment can be put in the drop box at the post office.

The next issue date is February 28, 2025 The deadline is February 22, 2025 at 4:00 pm.

The opinions expressed in this publication are those of the authors submitting various articles and do not reflect the opinions of COM, the board or its members. COM reserves the right to refuse to accept any advertising that may be illegal or not in compliance with our platform.

**LAKE MEAD CITY COMMUNITY CO-OP INC.**  
27011 N SANDY POINT DRIVE MEADVIEW, AZ 86444

**MEETING NOTICE****Sunday****March 2nd, 2025 2:00 p.m.**

**Main Meeting Room at the  
Lake Mead City Music Hall**

**26401 N. Pear Avenue in Lake Mead City, AZ 86444  
(off the corner of Pear and Byron)**

**IMPORTANT MEETING FOR MEMBERS OF  
THE LAKE MEAD CITY COMMUNITY CO-OP WATER HAULERS**



## MOHAVE COUNTY CORNER

By Jeanne Kentch  
Mohave County Assessor



Hello Mohave County!

I assume this month is a special month for many of you, considering it is Valentine's Day on February 14. This month of "love" is a very special month for us in the Assessor's office as well, because this is the month that we send out 264,257 "love letters" to all parcels in Mohave County. Our letters (or in some cases; postcards) are actually Notices of Value, "N.O.V.'s". These NOV's tell you the value of your property.

This year's NOV's give you the 2025 and the 2026 Limited Property Value (LPV) and Full Cash Value (FCV).

To understand the difference, your FCV is synonymous to the market value of your home and the LPV is the value you are taxed on. Once the LPV is established, your assessment ratio is determined based on the classification of your parcel, i.e., Residential, Commercial, Historical, and more.

For example, if your LPV is \$200,000 and your home is your primary residence, your assessment ratio will be 10%. Your Assessed value would be \$20,000. This amount is passed to the Mohave County Treasurer, and they calculate the taxes due. This calculation varies upon location, factors such as; are you in a fire district, a city, a school district, a water district and more. You will receive your Tax Bill sometime in March.

Let's say you do not agree with your FCV value, you then can appeal. All property owners have a right to appeal our values. **All appeals must be submitted, or post marked no later than April 1, 2025.** When we receive an appeal, our appraisers will reassess your parcel. We will check the land values, the improvement values and even the comparisons in your area for an accurate value. Most of the time we will visit the location to make certain our values are spot on. If we find you are correct in your appeal, we will alter your value to reflect the correct assessment. If we find that we are correct, and your values were not correct, we will stay with our value.

If you receive our reply and you still do not agree with our assessment, you can take your appeal to the Board of Equalization (BOE). This board meets in October, every year in Kingman, inside the Board of Supervisors auditorium. Just like a court, you state your case in front of a hearing officer and our appraisers will defend our values. The hearing officer will make the decision as to the value of your property.

After the BOE hearing, and if you still do not agree with our values, you are welcome to take your appeal to Tax Court in Phoenix, Arizona. There is a fee to appeal in Tax Court. Tax Court is just like our BOE hearings where you get to defend your values and we defend ours.

So, in essence, as a property owner, you have 3 opportunities to appeal our values. This is a great opportunity for you as a property owner and good opportunity for the Assessor's Office as well. This process keeps us on our toes by keeping your values FAIR and EQUITABLE, our #1 goal.

If you have any questions regarding the appeals process, don't hesitate to contact us at one of our 3 offices; Kingman 928-753-0703, Lake Havasu 928-453-0702 and Bullhead City 928-758-0701.

## FRIENDS OF ARIZONA JOSHUA TREE FOREST

Effective immediately, the Board of Directors will begin dissolving the Friends of Arizona Joshua Tree Forest non-profit group which will take several months. This action is being taken due to serious and ongoing health issues for current Board members as well as a decrease in volunteer participation over the last couple of years. If you are a current member and have paid your 2025 dues, we will issue a refund or you can leave the funds in place to help finish a couple of projects such as the new trail which will be completed this spring. Another project that will continue to be pursued is the application for Dark Sky Park certification which will be handled by Paul Margolies.

We are honored to have represented this community for the past 13 years in preserving and protecting our magnificent Joshua Tree Forest. We are also proud of our relationship with the Kingman Bureau of Land Management office which has resulted in collaboration on several important projects in the forest. Thank you for your support of our efforts to keep our Joshua Tree Forest as beautiful and unspoiled as always.

Pam and Chuck Steffen

**NEWLY FORMING IN MEADVIEW**  
**The "Wholistic Guild"**

(Guild: an association of persons for the furtherance of a similar purpose—in this case, HEALTHINESS!!)

Do you see or feel the need within you to Encourage and Support Preventive Wellness in our community??

Do you have a background in Natural Health and Healing methods??

Would you be interested in Sharing Your Knowledge via Workshops or Classes?

Are you open to actively Sharing your Skills and Training with those in need??

If so, please consider joining our Guild!!  
We will be creating a Directory of Subjects and Services prior to our kick-off event:

MEADVIEWS FIRST ANNUAL  
WHOLISTIC HEALTH FAIR  
MARCH 22, 2025  
!0:00 AM-4:00 PM at the MCA

**Questions ??**  
**Call Judyrose at (970) 234-4776**



**KINGMAN**  
**PREMIER PROPERTIES**

**OF MEADVIEW**

Dawn Brannies, Designated Broker

**INCREDIBLE FOOTHILLS OPPORTUNITY**



Prime 3Bed/2Bath Move-In Ready Home  
Open and Split Plan Fully Furnished  
Turn-Key as You Can Get - Better Hurry!

Always Ready to help you List and Sell!

**Jonathan Kiser, Manager**  
**Kat Howard, Sales ♦ Darlene Post, Sales**  
**Christina Purkiss, Sales**  
**(928) 564-2222 ★ 335 E. Pueblo Drive**

**SPECIAL OFFER**  
**25%**  
**Ends soon!!**

**Glaser Steel 760-553-3444**  
**YOUR VISION REALIZED WITH**  
**OUR STEEL BUILDINGS!**

**HANDYMAN SERVICE**

Carpentry, Electrical, Plumbing,  
RV Service, Decks, Bathrooms,  
Kitchens, Painting,  
Sheetrock, etc.

**(928) 830-4079**

Senior Discount

**Joe Cherry**

**Happy**  
**Valentines**  
**Day**

**LOCAL CHURCH NEWS**

**MEADVIEW CONNECTION**

**Meadview Community Church**

540 Hualapai Creek Dr  
(928) 218-1563

Sunday School 9:30 AM  
Sunday Worship 10:45 AM  
Sunday Fellowship Time 12:00 PM

Bible Study –Every other  
Wednesday at 5:00 PM  
Check our website for dates.

Bingo is every Friday at the MCA  
at 1:00 PM  
Doors open at 12:00  
(928) 218-1563

Check out our website for current  
events at:  
[meadviewcommunitychurch.com](http://meadviewcommunitychurch.com)

**Meadview Baptist Church**

**Pastor Curtis O'Brien**

**1035 Meadview Blvd.**

(928) 564-5305

[MBCPastor2112018@gmail.com](mailto:MBCPastor2112018@gmail.com)

[www.meadviewbaptist.com](http://www.meadviewbaptist.com)

**WEEKLY SCHEDULE:**

Sunday - 8:30 AM—Praise Team Practice

9:30 AM - Sunday School  
11:00 AM - Worship Service

**Thursday** - 3:30 PM - Bible Study/  
Prayer Meeting

**Saturday**-3:30 PM—Praise Team Practice

**Saturday** - 9:00 AM Men's Breakfast is held the first Saturday of every month. All men are welcome.

**February 23:** Wade Hammond Concert at 11:00 am in the Meadview Baptist Church.

**ANTHONY'S SPORTS CORNER**

Congratulations to the Philadelphia Eagles for winning Super Bowl 59 with a score of 40-22. The Eagles shut out the Kansas City Chiefs until the 4th quarter when they scored their 22 points. It was a great football season this year. I'm going to miss it, but baseball is just around the corner.

MLB Pre-season starts February 20. The first day of the regular season is Thursday, March 27. Hopefully, the Arizona Diamondbacks will have a great year.

The Phoenix Suns are in 10th place in the Western Conference with a record of 26-27. They still have 28 more games to go in the regular season.

In the NHL, the Vegas Golden Knights are in 2nd place in the Pacific Division in the Western Conference with a record of 33-17.

Auburn University is ranked #1 in the Men's College Basketball with a record of 21-2. Alabama is ranked #2 with a record of 20-3. Florida is coming in at #3 with a record of 20-3. March Madness is just around the corner.

UCLA is undefeated and is ranked #1 in the Women's College Basketball with a record of 23-0. Notre Dame is ranked #2 with a record of 21-2. Rounding up at #3 is Texas with a record of 24-2. March Madness is just around the corner for the Women's also.

NASCAR's opening weekend is in Daytona, Florida at the Daytona international Speedway. The Duel #1 and Duel #2 race is Thursday, February 13 and then the Daytona 500 is Sunday, February 16.

As always, you can watch your favorite sporting events at The Fisherman's Landing Bar. Until the next issue, keep watching sports, my friends.

**MEADVIEW HISTORY MUSEUM**



The Meadview History Museum will be open on Fridays and Saturdays from 1:00 pm-4:00 pm starting February 7! The museum is located in the small building next to the BoatHouse Grill and Café. Come on down and say hello!

**PRESIDENTS DAY  
FEDERAL HOLIDAY**

Presidents Day, a Federal Holiday is Monday, February 17. There will be no mail delivery Banks, post offices, schools and government offices will be closed.



**ST. MARY'S FOOD BANK  
DISTRIBUTION**

Meadview has been approved for two food distributions each month. The next distribution will be February 25 in the VFW parking lot at around 10:00 am. The following distribution will be on March 11.



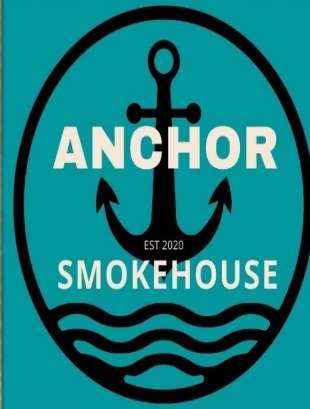
30180 N Hidden Dr / \$325,000 / MLS 025335



Southwestern style 2 bed/2 bath site built home  
Large 32 x 40 insulated garage with cabinets  
Stunning close-up views of the Grand Wash Cliffs  
Comes move-in ready with beautiful furnishings



**Michelene Provo/Designated Broker**  
**Realtor / Owner**  
Professional service with  
excellent communication!  
(928) 716-1472



TUESDAY THRU  
SUNDAY  
12:00-7:00PM



## STEAMTABLE SPECIALS

CHECK US OUT ON FACEBOOK  
[@Anchorsmokehouse2019](#)

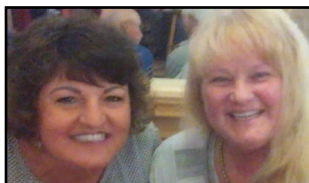
 *Meadview, Arizona*  
165 Bradley Bay  
928-564-2880 86444

**Canyon Cutz**   
30125 Escalante Dr Meadview, AZ 86444



**Vikilee Brooksby**  
**(435) 673-1593**  
Monday, Wednesday, Friday  
11:00 am--3:00 pm

**Eva Strahl**  
**(928) 377-2646**  
Tuesday, Thursday, Saturday  
9:00 am-1:00 pm



Please drop by the salon and let us know what we can do to help you feel more alive in 2025.

Please text or call for an appointment.  
Specializing in Men's and Women's Haircuts  
Color, Perms, Facial waxing, Pedicures



**We have games and tournaments!!**

- MONDAY Shuffleboard Tournament 4:00 PM
- TUESDAY Quick and Dead Tournament 5:00 PM
- WEDNESDAY Shuffleboard Tournament 11 AM
- THURSDAY 9 Ball Double Elimination Pool Tournament 5:00 PM
- FRIDAY 8 Ball Tournament 5:00 PM
- SUNDAY MJO Jazz Group 4:30—6:30 pm

Please come out and join us  
Thanks for your support.



290 Pueblo · Meadview, AZ  
(928) 564-2100

# iDea DEPOT

☎ (928) 328-8811  
✉ edie@idea-depot.net  
330 E Meadview Blvd  
Suite B  
Meadview, Arizona

Graphic Design  
Printing  
Laminating  
Signs  
Posters  
Custom Mugs  
Vinyl Applications  
Laser Engraving  
So Much More...



## BoatHouse Café & Grille

**Fridays  
& Saturdays  
8AM until 9PM**

**Open 7 Days**

**Sunday - Thursday  
8AM until 8PM**



**928-328-8850**  
30185 N Escalante Blvd



Did you know that you can do all of this right here in Meadview?

- **FRESH** Deli items
- **Party Platters**
- **Pizza Parties**
- **Private Events**
- **Birthday Parties**



Call to explore your options today!

**928-328-8818**

Closed Monday & Tuesday  
Open Wednesday through Sunday  
from 11AM until 6PM

300 East Meadview Boulevard . Suite F & G  
Meadview, Arizona 86444



# MEADVIEW MARKET

**WEDNESDAY THRU MONDAY  
11 AM - 6 PM**

## Grocery List

- MILK
- FRESH FRUIT
- BREAD
- EGGS
- BUTTER
- BAGGED ICE
- FRESH VEGGIES

## OUTPOST 86444

### Hours of Operation

Monday - Friday 11:00 am 'til 6 pm  
Saturday 11 am 'til 4 pm

250 E Pueblo Drive  
(928) 377-5477

**FOR SALE**

**2 COMMERCIAL LOTS**

690 and 720 Meadview Boulevard  
 343-21-072 and 343-21-073  
 Just east of Escalante Boulevard

Have water meter and electric is close by

Recently graded level, ready for your development  
 Great for storage yard or other use.

Asking \$50,000 for both, terms available  
 \$10,000 down, \$750 per month including 5% interest  
 All due in 3 years. . .Let's talk.

Ron Bernstein  
 (702) 278-6300  
 pepparts11@aol.com  
 Broker/owner



**FINE SEASONING BLENDS  
 ULTRA VIOLET PRINTING  
 CUSTOM & STOCK**

**GREAT! BOLD FLAVORS**  
**TRY OUR FLAVOR-PACKED SEASONING BLENDS.  
 TRANSFORM ANY MEAL WITH ON ONE OF OUR  
 12 UNIQUE, ALL NATURAL BLENDS.  
 VISIT US AT THE MEADVIEW FARMERS MARKET  
 TO SAMPLE THE BOLD FLAVORS.**

**OUR PRINTED PRODUCTS MAKE GREAT GIFTS.  
 PRINTED WITH UV INKS PROVIDING DURABLE  
 VIVID IMAGES ON A VARIETY OF MATERIALS**

CONTACT US ABOUT PRINTING YOUR  
 PERSONALIZED IMAGES

AVAILABLE AT THE MEADVIEW CHAMBER GIFT GALLERY

[WWW.TEHACHAPI.COM](http://WWW.TEHACHAPI.COM)  
[RROBISON@TEHACHAPI.COM](mailto:RROBISON@TEHACHAPI.COM)

*Gift Gallery* at

**Meadview Chamber of Commerce**  
 330 E. Meadview Blvd., Suite D Meadview, AZ 86444  
**Open Wednesday – Friday 10 AM - 3 PM;  
 Saturday 9AM - 3 PM; Sunday 11 AM - 3 PM**



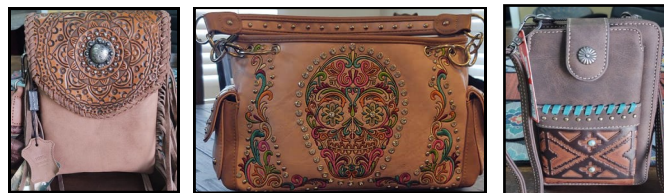
**Shari**

**LOCALLY HANDCRAFTED ITEMS**

Thank you for your support!  
 (928) 564-2425



**Metal and More  
 Yard Art and Home Décor  
 Hot New Items!**



These beautiful handbags feature a Concealed Carry Pocket

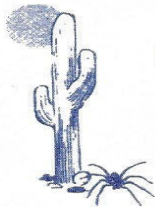
**More styles available while supplies last  
 Open Fridays and Saturdays  
 8:00 am—5:00 pm  
 Open Sundays 8:00 am-2:00 pm  
 115 Pueblo Drive**



**27070 N. Pierce Ferry Rd  
928-564-2855**

- ASCE CERTIFIED
- A/C
- TUNE UPS & BRAKES
- RV STORAGE
- BOAT STORAGE
- TOWING

**BLUE MOON PEST CONTROL  
LLC #5541**



Out of Kingman, AZ is interested in doing your pest control. We will be coming to Meadview on the 1<sup>st</sup> Tuesday of each month. If you would like service please call our office at:

**928-692-9417**  
Please ask for Cheryl



Affordable and Dependable  
Carpet Cleaning Service



**RotoVac  
Professional  
Cleaning**

**FREE  
Estimates**

**WAKE UP  
WITH  
A SMILE**



"A Superior Hot Water  
Extraction Method"  
RotoVac

- \*Carpet Cleaning
- \*Schotchgard
- \*Stain Removal
- \*Pet Odor Control
- \*Furniture Cleaning
- \*Area Rugs
- \*Auto, Boats & RVS
- \*Water Damage

**Anthony Carter**

**928-564-2668  
714-290-4503**

Email: [anthonycarter0425@yahoo.com](mailto:anthonycarter0425@yahoo.com)

**SHOP LOCAL.  
EAT LOCAL.  
SPEND LOCAL**



**SNACKS AND FOOD**

**COCKTAIL LOUNGE • LIQUOR STORE • BAIT & TACKLE  
290 PUEBLO • MEADVIEW**

# Meadview RV Park & Cozy Cabins



The closest facility to the  
Grand Canyon Skywalk with Spectacular Sunset Views!

## LOW MONTHLY RATES...

Year-Round Rates w/Full Hook-ups 30 & 50 AMP  
Cabins w/Full Kitchenette starting at \$75.00 a night

FREE Wireless Internet – Pet Friendly

24 Hour Security Video Surveillance for your Comfort and Security

New Open and Covered Storage Areas for Boats & RV

5'x 8' Storage Lockers / 8'x 20' Cargo Container

Propane, Bagged Ice, ATM, and Coin Laundry for your convenience...



[www.rv-park.com](http://www.rv-park.com) [rvpark@citilink.com](mailto:rvpark@citilink.com)

\* YEAR-ROUND RENTAL RATES for 30/50amp sites:

**Monthly: \$280.00 + Elec.**

RATES ARE FOR 2 PEOPLE - \$4.00 additional person(s)

\*STORAGE RATES for daily/monthly (upon availability):

**Covered Storage: \$3.00 / \$75.00**

**RV & Boat Open Storage: \$2.00 / \$50.00**

**5'x 8' Storage Locker \$2.00 / \$50.00**

**8'X 20' Cargo Container \$3.00 / \$75.00**

\*PRICES LISTED ABOVE DO NOT INCLUDE APPLICABLE TAXES

28100 N. Pierce Ferry Road  
Meadview, AZ 86444  
(928) 564-2662

**LOCAL ORGANIZATIONS**

If changes need to be made to your notice, please send an email to COM at [comads@comaz.info](mailto:comads@comaz.info)

**AL-ANON**  
 Are you troubled by someone's drinking?  
 Call 564-3467 or 564-2667

**FRIENDS OF THE LIBRARY**  
 Meets on the third Saturday of odd numbered months at 3:00 pm in the library.  
 564-2535

**BOOK DISCUSSION GROUP**  
 Meets on the third Saturday of even numbered months at 3:00 pm in the library  
 564-2535

**COMMUNITY ORGANIZATION OF MEADVIEW (COM)**  
 Meets at 10:00 am on the first Thursday of each month at the MCA Sept-May. Presents monthly programs of general interest to the community and publishes the Community News. Please visit the COM Website: [www.comaz.info](http://www.comaz.info) No membership required. (928) 564-2187.

**D.A.R.**  
 The Daughters of the American Revolution meet the 2nd Saturday every month in Kingman at the College Park Community Church September through May.



For God & Country  
 Veterans Advocacy  
 928-564-2666

**RED, WHITE AND BLUE QUILTERS OF MEADVIEW**

We are a non-profit group that makes quilts for Meadview are veterans.  
 We meet the 3rd and 4th Thursday each month at Meadview Community Church at 10:00 am.  
 For more information, please call Carolyn at (928) 715-7232

**MEADVIEW BAPTIST CHURCH**

[www.meadviewbaptist.com](http://www.meadviewbaptist.com)  
 Sunday School 9:30 am  
 Sunday Worship 11:00 am  
 Thurs Bible Study/Prayer Mtg 3:30pm  
 (928) 564-5305

**MEADVIEW COMMUNITY CHURCH**

540 Hualapai Creek Dr. (928) 218-1563  
 Sunday School 9:30 am  
 Sunday Worship 10:45 am  
 Sunday Fellowship Time 12:00 pm  
 Bible Study--Every other Wed. 5:00 pm  
 Check our website for dates  
 Bingo every Friday at the MCA at 1:00 pm  
<https://meadviewcommunitychurch.com>

**OUR LADY OF THE DESERT MISSION**

Dolan Springs, 928-767-3397  
 Rev. Victor Yakubu, Parochial Administrator  
 Rev. Julius Kayiwa, Parochial Vicar  
 Saturday Mass 4:00 PM English  
 Sunday Mass 10:00 AM Spanish

**THE CHURCH OF JESUS CHRIST OF LATTER DAY SAINTS**

Meets every Sunday from 10:00 am to 12:00 noon.  
 16375 Pierce Ferry Road  
 Dolan Springs, AZ  
 (928) 737-3100

**MEADVIEW QUAIL**

Meets on 3rd Tuesday of each month at 10:00 am at the MCA (except for June, July and Aug.)



**MEADVIEW AREA CHAMBER OF COMMERCE**

Meets on the second Tuesday of the month at 5:30 pm in the Barn. Visit website for more information: 564-2425

**Friends of AZ Joshua Tree Forest**

Contact us through our website: [arizonajoshuatreeforest.org](http://arizonajoshuatreeforest.org)  
 Or email us at: [arizonajoshatreeforest@gmail.com](mailto:arizonajoshatreeforest@gmail.com)

**NEIGHBORHOOD WATCH**

Meet on the last Saturday of odd numbered months at 10 am in the MCA except the November meeting on Nov. 22.

**VETERANS OFF ROAD RIDERS**

Meet the last Saturday of each month at 9:00 am at the VFW  
 For more information, call the VFW

**MCA NEWS**

**Busy Hands**  
 Every Wednesday  
 10:30 - 6:00 pm  
 Come for a while or stay the whole time

**MCA MEMBER MEETING**

Quarterly 2nd Saturday  
 9:00 am at the MCA.  
 All members urged to attend.

**Daily Facility Hours**  
**8:00 am—9:00 pm**

**Game Nights**  
**Every Wednesday**  
**From 6:00 pm—8:30 pm**

**Office Hours**  
**Tuesday-Friday: 9:00 am-4:00 pm**  
**Saturday 9:00 am—1:00 pm**  
**Closed Sunday and Monday**  
**564-2313**

**EXPLORERS**

The Explorers schedule hikes and day trips of places of interest throughout Mohave County. Follow the Explorer's activities on Facebook at Meadview Explorers.

**BINGO**

Fridays at 1:00 pm.  
 The doors will open at 12:00 P.M.  
 We are always looking for volunteers.  
 Please call Cindy at (909) 659-6618

**MEADVIEW RIDGERIDERS**

Meet on the first Saturday of the month at 8:30 am in the MCA with a ride following the meeting. Call (406) 431-4616 for more information

<https://www.facebook.com/MeadviewRidgeRiders/>

**FARMER'S MARKET**

1st and 3rd Saturday  
 9:00 am—Noon  
 At the Meadview Marketplace

**If the information in your notice changes, please send corrections or changes to [comads@outlook.com](mailto:comads@outlook.com)**



# KINGMAN REGIONAL MEDICAL CENTER

## Your Partner for Better Health

As the largest healthcare provider in northwest Arizona, we offer a full range of services to meet the health and wellness needs of our vibrant, growing community. Our services range from essential primary and preventative care to sophisticated medical imaging and diagnostic capabilities, as well as advanced treatments in cardiac care and cancer care. We also provide progressive rehabilitation and pain management therapies.



### Medical Directory

#### Balance Therapy

KRMC Dizziness & Balance Center . . . 681-8732

#### Cancer Care

KRMC WL Nugent Cancer Center . . . 692-4665

#### Cardiovascular Care

Kingman Cardiovascular  
Associates . . . . . 681-8724

#### Chiropractic Care

Kingman Orthopedics . . . . . 263-3516

#### Disease Management

KRMC Disease Management Clinic . . . 681-8738

#### Gastroenterology

High Desert Gastroenterology . . . . 681-8715

#### General Surgery

Hillcrest Surgical Associates . . . . . 681-3535  
KRMC Pre-Operative Clinic . . . . . 681-8728  
Mohave Surgical Specialists . . . . . 681-8720

#### Home Health

KRMC Home Health . . . . . 757-0630

#### Hospice

KRMC Hospice Services . . . . . 692-4680  
KRMC Joan & Diana  
Hospice Home . . . . . 681-8710

#### Medical Imaging

KRMC Imaging Center . . . . . 692-2727

#### Laboratory Services

KRMC Medical Professional Center  
Laboratory . . . . . 263-4600  
KRMC Hualapai Mountain Campus  
Laboratory . . . . . 263-3673  
KRMC Golden Valley Medical Center  
Laboratory . . . . . 681-8500

#### Obstetrics/Gynecology

Kingman OB/GYN Associates . . . . . 681-8705

#### Orthopedic Care

Kingman Orthopedics . . . . . 681-8693

#### Pain Management

KRMC Pain Management . . . . . 681-8570

#### Pediatrics

Joshua Tree Pediatrics . . . . . 681-8706

#### Physical Fitness

Del E. Webb Wellness &  
Rehabilitation Center . . . . . 692-4600

#### Physical Therapy & Rehabilitation

KRMC Outpatient Therapy . . . . . 681-8732

#### Physiatry

KRMC Physiatry . . . . . 681-8732

#### Primary Care

Golden Valley Medical Center . . . . 681-8500  
KRMC Family Practice  
Residency Clinic . . . . . 681-8701  
KRMC Primary Care . . . . . 681-8530  
Mountain Shadow Family Medicine . . 681-8530

#### Pulmonary Care

Kingman Pulmonary Associates . . . 757-3133  
KRMC Lung Health Program . . . . . 681-8736

#### Sleep Disorders

KRMC Sleep Disorders Center . . . . 692-4144

#### Speech Therapy

KRMC Speech &  
Hearing Specialists . . . . . 681-8717

#### Sports Medicine

Kingman Orthopedics . . . . . 681-8693

#### Thoracic Surgery

Kingman Thoracic Surgery . . . . . 681-8520

#### Urgent Care

KRMC Urgent Care . . . . . 753-3303

#### Urology

Kingman Urology . . . . . 681-8686

#### Vein Center

High Desert Vein Center Kingman . . 681-8755