



Community News of Meadview and Lake Mead City

SPONSORED BY
THE COMMUNITY ORGANIZATION OF MEADVIEW

online at <www.comaz.info>

Adrienne O’Keeffe-Editor
Jonathan Kiser--Assistant Editor

MAY 23, 2025

SPOTLIGHT ON BOATING “The lake is calling me and I must go”



It’s that time of year when our thoughts are on the sport of boating which is probably the reason many of us moved to the Meadview area. However, boating is just one feature we can enjoy living here. In one day you can swim, boat, hike, cycle, camp and fish at America’s first and largest national recreation area. The Lake Mead National Recreation Area is a year-round playground that spreads across 1.5 million acres of mountains, canyons, valleys and two vast lakes: Lake Mead and Lake Mohave.

There are things we need to consider before hitting the water.

Registration: Boat registration and renewals can be done on-line by going to: <https://www.azgfd.com/boating/online-boating-registration/>. You can also register or renew at the Kingman Field Office on Stockton Hill Road. Trailer registration is done at the Arizona Department of Motor Vehicles.

Fishing: If you put a hook in the water, you must carry a valid Arizona fishing license. Fishing licenses are purchased from Arizona Game and Fish at one of their field offices or on-line at <https://www.azgfd.com/License/>.

Mechanical Readiness: There is nothing fun about breaking down in the middle of the lake. Be sure your boat has been serviced by a reputable boat mechanic. Water and heat are hard on mechanical devices. If you have removed the drain plug as recommended, make sure you have replaced it. Sounds basic, but boats have been launched without the plug. If you have any concerns about how your boat will operate, plan your outing with friends with another boat.

Laws of the Lake: Be familiar with the legal aspects of boating. The laws are in place to assure boater safety especially regarding proper floatation devices, navigation lights and alcohol use. Law enforcement on Lake Mead is covered by many agencies including: Mohave County Sheriff’s Dept., Arizona State, Nevada State, National Park Service and Game and Fish. Lake Mead is part of the National Park Service and fireworks are prohibited in ALL national parks.

Boating Safety: Arizona Game and Fish offers boating information classes on-line, in home study or classroom formats. Successful completion of a class will earn a certificate that may reduce insurance costs. For more information, go to <https://www.azgfd.com/education/boating/>. May 17-23 is National Safe Boating Week. For more information about Safe Boating, go to <https://safeboatingcampaign.com/>.

Weather: Before going out, check the weather conditions. LMNRA posts current conditions on their Facebook page: Lake Mead National Recreation Area - National Park Service. Sign up for notifications so you will get the latest updates. Learn to read the signs of an incoming storm. Fast building clouds are a good indication that things may get rough. Get off the water at the first sign of a storm to avoid a struggle in pulling out.

Be Informed: There are maps and literature in the Chamber of Commerce Office located in the Marketplace on Meadview Boulevard. The Chamber is open Wednesday through Sunday. Check the ad on page 9 for hours. You can also get brochures and maps at the Bibles Center located outside Boulder City.

The lake is inviting, the fish are biting and summer weather is here. So have fun on the water but stay safe.

IMPORTANT DATES AND EVENTS

May 24 Annual MCA Membership Meeting at 10:00 am in the MCA Auditorium. Voting will be after the meeting adjourns.

May 26 Memorial Day: Federal Holiday. Post offices, banks, schools and government offices will be closed.

May 26 Flag Raising at the VFW at 11:00 am

May 27 St. Mary’s Food Bank Distribution in the VFW parking lot at 10:00 am

IN THIS ISSUE...

Community Event Calendar May / June	Page 2
Celebrating Memorial Day 2025	Page 4
Vacation Bible School	Page 4
Meadview Connection—Church News	Page 5
Anthony’s Sports Corner	Page 5
MCA Annual Meeting	Page 5
St. Mary’s Food Bank Distribution	Page 5
County Corner with SueAnn Mello	Page 6

MEADVIEW COMMUNITY EVENT CALENDAR FOR MAY / JUNE 2025

May 23	Bingo in the MCA Auditorium. Doors open at 12:00 and games begin at 1:00 pm
May 24	Annual MCA Membership Meeting at 10:00 am in the MCA Auditorium. Voting will take place after the meeting adjourns.
May 26	Memorial Day: Federal Holiday. Post offices, schools, government offices and banks will be closed.
May 26	Flag Raising at the VFW at 11:00 am
May 27	St. Mary's Food Bank Distribution in the VFW parking lot at 10:00 am
May 28	Busy Hands—MCA Auditorium from 10:30 am —6:00 pm
May 30	Bingo in the MCA Auditorium. Doors open at 12:00 and games begin at 1:00 pm
May 31	Neighborhood Watch Meeting in the MCA Auditorium at 10:00 am
June 4	Busy Hands—MCA Auditorium from 10:30 am —6:00 pm
June 6	Bingo in the MCA Auditorium. Doors open at 12:00 and games begin at 1:00 pm
June 7	Farmer's Market in the Meadview Marketplace from 9:00 am—Noon
June 10	St. Mary's Food Bank Distribution in the VFW parking lot at 10:00 am
June 11	Busy Hands—MCA Auditorium from 10:30 am —6:00 pm
June 11	Meadview Area Chamber of Commerce Meeting at The Barn at 6:15 pm
June 13	Bingo in the MCA Auditorium. Doors open at 12:00 and games begin at 1:00 pm
June 14	Flag Day. Flag raising at the VFW at 11:00 am
June 15	Father's Day
June 18	Busy Hands—MCA Auditorium from 10:30 am —6:00 pm
June 20	Bingo in the MCA Auditorium. Doors open at 12:00 and games begin at 1:00 pm
June 21	Farmer's Market in the Meadview Marketplace from 9:00 am—Noon
June 27-28	Vacation Bible School at the Meadview Baptist Church from 9:00 am –noon. There will be a closing program on Sunday, June 29 from 11:00 am—noon.

YARD SALE
30760 N Spencer

Friday May 30 -Sun June 1
 9:00 am-3:00 pm

Downsizing
 All must go - you name it; we have it!
 Household items, lake stuff,
 RV stuff, generators,
 compressors,
 Wood working saws/tools
 accessories, wood, tools,
 all types of crafts-sewing/fabric
 Tole painting, wood forms
 lots more crafts,
 gold detecting stuff
 metal file cabinet.

COMMUNITY NEWS

Published every other Friday

Fees for ads: 3" ad: \$6.00 per issue,
 1/4 page: \$8.00 per issue
 Half page: \$16.00 per issue
 Full page: \$32.00 per issue
 Business card ad/\$6.00 per issue

Please put ads with the payment into the Community News drop box at the Post Office or mail to P.O. Box 31, Meadview, **Make checks payable to "COM"**. Ads can be emailed to comads@comaz.info and payment can be put in the drop box at the post office.

The next issue date is JUNE 6, 2025 The deadline is May 31, 2025 at 4:00 pm.

The opinions expressed in this publication are those of the authors submitting various articles and do not reflect the opinions of COM, the board or its members. . COM reserves the right to refuse to accept any advertising that may be illegal or not in compliance with our platform.

FISHERMAN'S LANDING'S *Bar*

JOIN US FOR OUR DOUBLE HEADER MEMORIAL DAY WEEKEND CELEBRATION

FRIDAY MAY 23
SATURDAY MAY 24
FROM 8:00 PM-???



DANCE THE NIGHT AWAY TO THE
MUSIC OF BUD MICKLE AND HIS BAND



290 Pueblo · Meadview, AZ
(928) 564-2100

CELEBRATING MEMORIAL DAY 2025

Although summer officially begins on Friday, June 20, most people think of Memorial Day as the start of summer. Landing on the last Monday in May, Memorial Day is a federal holiday and schools, post offices, banks, government offices and a majority of businesses are closed in observance of the day.

Much like [Labor Day](#) serves as the unofficial end of summer, [Memorial Day](#) typically kicks it off with many people using the long weekend as an excuse to travel, go to the lake, have a barbecue and spend time with friends and family.

Memorial Day is one of 11 federal holidays observed each year and is set aside to honor and remember military servicemen and women who've sacrificed their lives in service to their country. In 1868, it was officially designated as a day to honor those fallen in service to their country during the Civil War. According to the Library of Congress, three years after the end of the war, John A. Logan, Commander of the Grand Army of the Republic, set aside May 30 for "Soldiers' Memorial Day."

Each year, communities across the U.S. hold parades or ceremonies to recognize veterans, active service members and other military personnel. Those who have lost family or friends use the occasion to visit the graves of their loved ones, leaving flowers or other mementos of remembrance and respect. To pay tribute to fallen servicemen and women, a wreath is placed on the Tomb of the Unknown Soldier in an annual ceremony held at Arlington Cemetery in Arlington, Virginia on Memorial Day.

In 2000, Congress signed the "The National Moment of Remembrance Act" into law. From that point forward, citizens were encouraged to pause for a moment of silence to remember those who've died in service to our country at 3:00 p.m. local time each Memorial Day.

If you plan to fly a flag on Memorial Day, it should be flown at half-staff from sunrise to noon and then it should be briskly raised to the top of the staff until sunset.

In Meadview, there will be a Flag Raising ceremony at the VFW at 11:00 am on Memorial Day. Fisherman's Landing will have a "Double Header" party with live entertainment on Friday and Saturday nights. Expect to see a lot of visitors in Meadview as Memorial Day is typically the kickoff of the summer boating season.

No matter how you celebrate, remember to take time to honor our fallen military heroes.



Dates: Friday, June 27, and Saturday, June 28, with a brief closing program at Meadview Baptist Church on Sunday, June 29. Contact for questions Meadviewbaptistvbs@gmail.com Friday and Saturday will be 9am to noon and Sunday 11-noon.



Dawn Brannies, Designated Broker
SWEET RETREAT IN CITY CENTER



Totally Dressed Up and Move-In Ready
Fully Furnished Home Inside and Out
Elaborated Front Deck with Privacy Fencing
Awesome Workshop and Garden Shed

Always Ready to help you List and Sell!

Jonathan Kiser, Manager
Kat Howard, Sales ♦ Darlene Post, Sales
Christina Purkiss, Sales

(928) 564-2222 ★ 335 E. Pueblo Drive

LOCAL CHURCH NEWS

Meadview Community Church
 540 Hualapai Creek Dr
 (928) 218-1563

- **Sunday**
 9:30 AM Sunday School
 10:45 AM Morning Worship
 12:00 PM Fellowship Time
- **Wednesday**
 5:00 PM Bible Study –Every week.
- **Friday**
 1:00 PM Bingo at MCA

Check out our website for current events at:
meadviewcommunitychurch.com

Meadview Baptist Church
Pastor Curtis O'Brien
 1035 Meadview Blvd.
 (928) 564-5305
MBCPastor2112018@gmail.com
www.meadviewbaptist.com

WEEKLY SCHEDULE:
 Sunday - 8:30 AM—Praise Team Practice
 9:30 AM - Sunday School
 11:00 AM - Worship Service

Wednesday– 4:00pm—Bible Study

First Saturday of the month: Women's breakfast 9:00 am at 1155 Meadview Blvd. at Parsonage.

First Saturday of the month: Men's breakfast at 9:00 am Meadview Baptist Church, 1035 Meadview Blvd.

Saturday-3:30 PM—Praise Team Practice

Vacation Bible School will be hosted at the Baptist Church this year for children ages 5-12. The two-day program will be from 9:00 am—noon on Friday, June 27 and Saturday, June 28. On Sunday, June 29, there will be a brief closing program from 11:00 am—noon.

Contact the church office to sign up for the sessions.

MEADVIEW CONNECTION

ANTHONY'S SPORTS CORNER

The Vegas Golden knights lost the Oilers in game 5 of the second round of the NHL playoffs. Still proud of them, they had a great year. The Edmonton Oilers will play against the Dallas Stars will be playing in the NHL Western Conference Championship. The Florida Panthers will play against the Carolina Hurricane in the Eastern Conference Championship. I believe it will be Florida vs Oilers in The Stanley Cup finals.

The Minnesota Timberwolves will play against the Oklahoma Thunder in the NBA Western Conference Championship. The New York Knicks are playing the Indiana Pacers in the NBA Eastern Conference Championship. I believe it will be Minnesota Timberwolves vs Indiana Pacers in the NBA Finals.

NASCAR will be in Charlotte, North Carolina at the Charlotte Motor Speedway on Sunday, May 25. On June 1, they will be traveling to Nashville, Tennessee and will be racing at the Nashville Superspeedway.

The Arizona Diamondbacks are in 4th place in the NL West Division with a record of 25-22. The LA Dodgers are in 1st place in the NL West Division with a 29-18 record. The Atlanta Braves are in 3rd place in the NL East Division with a record of 24-23. The NY Yankees are in 1st place in the AL East Division with a 27-19 record. The Detroit Tigers are in 1st place in the AL Central Division with a record of 31-16 which gives them the best record in baseball right now.

In the WNBA, the Indiana Fever won their first game of the season against the Chicago Sky by 35 points. I believe they will have a great year starting like that in the first game. Caitlin Clark is in her second year with in the WNBA and continues to break records. She has the most Triple Doubles in the WNBA. She also holds the record for the most games with 25 or more points and 10 or more assists. I just love watching her play.

As Always, you can watch your favorite Sports Event at The Fisherman's Landing Bar. Until the Next Issue, keep watching sports my friends

MCA ANNUAL MEETING



The Annual MCA Membership Meeting will be held on Saturday, May 24 at 10:00 am in the auditorium. "In-person" voting for three open board positions will take place immediately after the meeting adjourns until 2:00 pm. Mail-in ballots must be received by 2:00 pm on Friday, May 23.

If you have any questions regarding the meeting or voting, please contact the office at (928) 564-2313, The office is open Tuesday through Friday from 9:00 am—4:00 pm and on Saturday from 9:00 am—1:00 pm.



ST. MARY'S FOOD BANK

The next distribution will be May 27. The first distribution in June be on June 10 Please be prepared to show proof of Arizona residency.

MOHAVE COUNTY CORNER

By SueAnn Mello
Mohave County Treasurer



As your Mohave County Treasurer, I am excited to bring you this month's County Corner and share exciting updates and developments from my office.

This year's Tax Deed Sale was held from March 3 through March 7, 2025. It was a tremendous success for the County! Of the 829 parcels of vacant land that were available for purchase at the auction, 824 parcels were sold representing a record-breaking 99.4% of the total! The sale generated \$2.4 million for the County with proceeds going towards unpaid taxes, interest, penalties, fees and costs associated with taking the parcels to auction. An estimated \$1.65 million went directly to the Mohave County General Fund. This was a highly successful Tax Deed Sale for Mohave County!

During this year's legislative session, my office worked with the Maricopa County Treasurer's Office to provide state legislators with proposed revisions to the Arizona Revised Statutes related to tax deeds. The statutory revisions that were submitted and subsequently signed into law by Governor Hobbs now give the County Board of Supervisors additional options for approving the sale of tax-deeded parcels to neighboring property owners.

Mohave County recently implemented a very successful Over-the-Counter policy of making available for sale tax-deeded parcels that have been offered for sale at auction but do not sell, which has also been officially codified into statute. This addition to statute provides clear language for counties to have a continual option to sell tax-deeded parcels, allowing for the return of parcels to the tax roll with new private ownership.

The second half installment of 2024 property taxes was due on May 1, 2025, and any balance remaining is now delinquent. Delinquency notices will be mailed out in early June for all outstanding balances.

Our office is open from 8:00 a.m. to 5:00 p.m. Monday through Friday. Property taxes can be paid online, by mail, in-person at Kingman's Mohave County Administration building or by phone by calling Point & Pay at (855) 814-6451. We also have drop boxes available in Bullhead City, Kingman, and Lake Havasu City at these addresses:

- 1130 Hancock Street, Bullhead City, AZ 86442
- 700 W Beale Street, Kingman, AZ 86402
- 2001 College Drive, Suite 93, Lake Havasu City, AZ 86403

More information about property taxes can be found on the Treasurer's website at www.mohave.gov.

LAKE MOHAVE RANCHOS FIRE DISTRICT

LMRFD FUNDRAISER

50/50 TICKETS BEING SOLD NOW!

The drawing will be held October 11, 2025
In Meadview at the Oktoberfest

GOAL: \$15,000

**To purchase an automatic lift gurney for the
LMRFD Ambulance stationed in Meadview**

Tickets will be available at Community Events in Dolan Springs
and Meadview



HOURS: Friday and Saturday 1:00 pm—4:00 pm

Located in the building next to the BoatHouse



MEMORIAL DAY FLAG RAISING
Monday, May 26 at 11:00 at the VFW



27041 N Hummingbird Ln / \$210,000 / MLS 029322

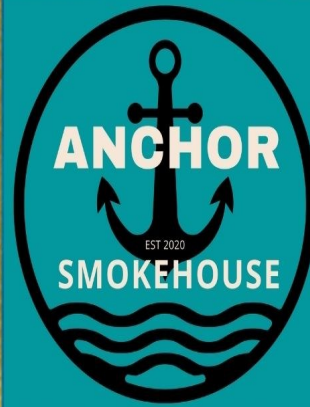


Well maintained 2 bed/2 bath home with bonus room
1 acre lot with multiple outbuildings and 2 large carports
Beautiful panoramic views from the front deck!

**Michelene Provo/Designated Broker
Realtor / Owner**

Professional service with
excellent communication!
(928) 716-1472

mich@cactuswrenrealty.net
www.meadviewrealestate.com



TUESDAY THRU
SUNDAY
12:00-7:00PM



STEAMTABLE SPECIALS

CHECK US OUT ON FACEBOOK
[@Anchorsmokehouse2019](https://www.facebook.com/Anchorsmokehouse2019)



Canyon Cutz 

30125 Escalante Dr Meadview, AZ 86444



Vikilee Brooksby
(435) 673-1593

Monday, Wednesday, Friday
11:00 am--3:00 pm

Eva Strahl
(928) 377-2646

Tuesday, Thursday, Saturday
9:00 am-1:00 pm



Cool Summer Cutz at cool prices
Contact Vi kilee or Eva to schedule an appointment
10% Discount for Vets

Please text or call for an appointment.
Specializing in Men's and Women's Haircuts
Color, Perms, Facial waxing, Pedicures
Gift Certificates Available



We have games and tournaments!!

- MONDAY Shuffleboard Tournament 4:00 PM
- TUESDAY Quick and Dead Tournament 5:00 PM
- WEDNESDAY Shuffleboard Tournament 11 AM
- THURSDAY 9 Ball Double Elimination
Pool Tournament 5:00 PM
- FRIDAY 8 Ball Tournament 5:00 PM
- SUNDAY Guitar Playing and Singing with Jay
5:30 pm

Please come out and join us
Thanks for your support.



290 Pueblo · Meadview, AZ
(928) 564-2100

iDea DEPOT

(928) 328-8811
edie@idea-depot.net
470 E Pueblo Drive
"Little Barn"
Meadview, Arizona

Graphic Design
Printing
Laminating
Signs
Posters
Custom Mugs
Vinyl Applications
Laser Engraving
So Much More...



THE WAFFLE CONE

FROZEN CUSTARD & MORE

Did you know that you can do all of this right here in Meadview?

- **FRESH** Deli items
- **Party Platters**
- **Pizza Parties**
- **Private Events**
- **Birthday Parties**



BoatHouse Café & Grille

Fridays & Saturdays
8AM until 9PM

Open 7 Days

Sunday - Thursday
8AM until 8PM



928-328-8850
30185 N Escalante Blvd

Call to explore your options today!

928-328-8818

Closed Monday & Tuesday
Open Wednesday through Sunday
from 11AM until 6PM

300 East Meadview Boulevard . Suite F & G
Meadview, Arizona 86444



MEADVIEW MARKET

WEDNESDAY THRU MONDAY
11 AM - 6 PM

Grocery List

- MILK
- FRESH FRUIT
- BREAD
- EGGS
- BUTTER
- BAGGED ICE
- FRESH VEGGIES

OUTPOST 86444

Hours of Operation

Monday - Friday 11:00 am 'til 6 pm
Saturday 11 am 'til 4 pm

250 E Pueblo Drive
(928) 377-5477

Metal Carports/Garages

GLASER STEEL



760-553-3444

glasersteel@yahoo.com

Serving California and Western Arizona



FINE SEASONING BLENDS ULTRA VIOLET PRINTING CUSTOM & STOCK

GREAT! BOLD FLAVORS

**TRY OUR FLAVOR-PACKED SEASONING BLENDS.
TRANSFORM ANY MEAL WITH ON ONE OF OUR
12 UNIQUE, ALL NATURAL BLENDS.
VISIT US AT THE MEADVIEW FARMERS MARKET
TO SAMPLE THE BOLD FLAVORS.**

**OUR PRINTED PRODUCTS MAKE GREAT GIFTS.
PRINTED WITH UV INKS PROVIDING DURABLE
VIVID IMAGES ON A VARIETY OF MATERIALS**

CONTACT US ABOUT PRINTING YOUR
PERSONALIZED IMAGES

AVAILABLE AT THE MEADVIEW CHAMBER GIFT GALLERY

WWW.TEHACHAPI.LLC.COM
RROBISON@TEHACHAPI.LLC.COM

Gift Gallery

at the Meadview Area Chamber of Commerce
330 E. Meadview Blvd., Suite D
Meadview, AZ 86444
Open Wednesday – Friday 10 AM - 3 PM
Saturday 9AM - 3 PM
Sunday 11 AM - 3 PM



Amy

LOCALLY HANDCRAFTED ITEMS

Welcome Packets Available

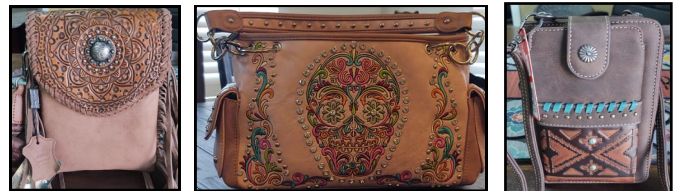
Thank you for your support!

(928) 564-2425



**Metal and More
Yard Art and Home Décor**

Hot New Items!



These beautiful handbags feature a Concealed Carry Pocket

**More styles available while supplies last
Open Fridays and Saturdays**

8:00 am—5:00 pm

Open Sundays 8:00 am-2:00 pm

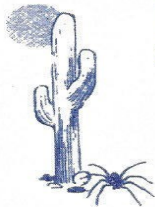
115 Pueblo Drive



**27070 N. Pierce Ferry Rd
928-564-2855**

- ASCE CERTIFIED
- A/C
- TUNE UPS & BRAKES
- RV STORAGE
- BOAT STORAGE
- TOWING

**BLUE MOON PEST CONTROL
LLC #5541**



Out of Kingman, AZ is interested in doing your pest control. We will be coming to Meadview on the 1st Tuesday of each month. If you would like service please call our office at:

928-692-9417
Please ask for Cheryl



Affordable and Dependable
Carpet Cleaning Service



**RotoVac
Professional
Cleaning**

**FREE
Estimates**

**WAKE UP
WITH
A SMILE**

"A Superior Hot Water
Extraction Method"
RotoVac

- *Carpet Cleaning
- *Schotchgard
- *Stain Removal
- *Pet Odor Control
- *Furniture Cleaning
- *Area Rugs
- *Auto, Boats & RVS
- *Water Damage

Anthony Carter

**928-564-2668
714-290-4503**

Email: anthonycarter0425@yahoo.com

**SHOP LOCAL.
EAT LOCAL.
SPEND LOCAL**



SNACKS AND FOOD

**COCKTAIL LOUNGE • LIQUOR STORE • BAIT & TACKLE
290 PUEBLO • MEADVIEW**

LOCAL ORGANIZATIONS

If changes need to be made to your notice, please send an email to COM at comads@comaz.info

MEADVIEW BAPTIST CHURCH

www.meadviewbaptist.com
 Sunday School 9:30 am
 Sunday Worship 11:00 am
 Mid-week Bible Study Wednesday at 4:00 pm
 (928) 564-5305

MCA NEWS

Busy Hands
 Every Wednesday
 10:30 - 6:00 pm
 Come for a while or stay the whole time

FRIENDS OF THE LIBRARY

Meets on the third Saturday of odd numbered months at 3:00 pm in the library.
 564-2535

MEADVIEW COMMUNITY CHURCH

540 Hualapai Creek Dr. (928) 218-1563
 Sunday School 9:30 am
 Sunday Worship 10:45 am
 Sunday Fellowship Time 12:00 pm
 Bible Study--Every other Wed. 5:00 pm
 Check our website for dates
 Bingo every Friday at the MCA at 1:00 pm
<https://meadviewcommunitychurch.com>

MCA MEMBER MEETING

Quarterly 2nd Saturday
 9:00 am at the MCA.
 All members urged to attend.
Daily Facility Hours
8:00 am—9:00 pm

BOOK DISCUSSION GROUP

Meets on the third Saturday of even numbered months at 3:00 pm in the library
 564-2535

OUR LADY OF THE DESERT MISSION

Dolan Springs, 928-767-3397
 Rev. Victor Yakubu, Parochial Administrator
 Rev. Julius Kayiwa, Parochial Vicar
 Saturday Mass 4:00 PM English
 Sunday Mass 10:00 AM Spanish

Game Nights
Every Wednesday
From 6:00 pm—8:30 pm

Office Hours

Tuesday-Friday: 9:00 am-4:00 pm
 Saturday 9:00 am—1:00 pm
 Closed Sunday and Monday
564-2313

COMMUNITY ORGANIZATION OF MEADVIEW (COM)

Meets at 10:00 am on the first Thursday of each month at the MCA Sept-May. Presents monthly programs of general interest to the community and publishes the Community News. Please visit the COM Website: www.comaz.info No membership required. (928) 564-2187.

THE CHURCH OF JESUS CHRIST OF LATTER DAY SAINTS

Meets every Sunday from 10:00 am to 12:00 noon.
 16375 Pierce Ferry Road
 Dolan Springs, AZ
 (928) 737-3100

EXPLORERS

The Explorers schedule hikes and day trips of places of interest throughout Mohave County. Follow the Explorer's activities on Facebook at Meadview Explorers.

D.A.R.

The Daughters of the American Revolution meet the 2nd Saturday every month in Kingman at the College Park Community Church September through May.



MEADVIEW QUAIL

Meets on 3rd Tuesday of each month at 10:00 am at the MCA (except for June, July and Aug.)



BINGO

Fridays at 1:00 pm.
 The doors will open at 12:00 P.M.
 We are always looking for volunteers.
 Please call Cindy at (909) 659-6618

MEADVIEW RIDGERIDERS

Meet on the first Saturday of the month at 8:30 am in the MCA with a ride following the meeting. Call (406) 431-4616 for more information

<https://www.facebook.com/MeadviewRidgeRiders/>



For God & Country
 Veterans Advocacy
 928-564-2666

MEADVIEW AREA CHAMBER OF COMMERCE

Meets on the second Wednesday of the month at 6:15 pm in the Barn. Visit website for more information: 564-2425

NEIGHBORHOOD WATCH

Meet on the last Saturday of odd numbered months at 10 am in the MCA except the November meeting on Nov. 22.

RED, WHITE AND BLUE QUILTERS OF MEADVIEW

We are a non-profit group that makes quilts for Meadview veterans.

We meet the 3rd and 4th Thursday each month at Meadview Community Church at 10:00 am.

For more information, please call Carolyn at (928) 715-7232

VETERANS OFF ROAD RIDERS

Meet the last Saturday of each month at 9:00 am at the VFW

FARMER'S MARKET

1st and 3rd Saturday
 9:00 am—Noon
 At the Meadview Marketplace

If the information in your notice changes, please send corrections or changes to comads@outlook.com



KINGMAN REGIONAL MEDICAL CENTER

Your Partner for Better Health

As the largest healthcare provider in northwest Arizona, we offer a full range of services to meet the health and wellness needs of our vibrant, growing community. Our services range from essential primary and preventative care to sophisticated medical imaging and diagnostic capabilities, as well as advanced treatments in cardiac care and cancer care. We also provide progressive rehabilitation and pain management therapies.



Medical Directory

Balance Therapy

KRMC Dizziness & Balance Center . . . 681-8732

Cancer Care

KRMC WL Nugent Cancer Center . . . 692-4665

Cardiovascular Care

Kingman Cardiovascular
Associates 681-8724

Chiropractic Care

Kingman Orthopedics 263-3516

Disease Management

KRMC Disease Management Clinic . . . 681-8738

Gastroenterology

High Desert Gastroenterology 681-8715

General Surgery

Hillcrest Surgical Associates 681-3535
KRMC Pre-Operative Clinic 681-8728
Mohave Surgical Specialists 681-8720

Home Health

KRMC Home Health 757-0630

Hospice

KRMC Hospice Services 692-4680
KRMC Joan & Diana
Hospice Home 681-8710

Medical Imaging

KRMC Imaging Center 692-2727

Laboratory Services

KRMC Medical Professional Center
Laboratory 263-4600
KRMC Hualapai Mountain Campus
Laboratory 263-3673
KRMC Golden Valley Medical Center
Laboratory 681-8500

Obstetrics/Gynecology

Kingman OB/GYN Associates 681-8705

Orthopedic Care

Kingman Orthopedics 681-8693

Pain Management

KRMC Pain Management 681-8570

Pediatrics

Joshua Tree Pediatrics 681-8706

Physical Fitness

Del E. Webb Wellness &
Rehabilitation Center 692-4600

Physical Therapy & Rehabilitation

KRMC Outpatient Therapy 681-8732

Physiatry

KRMC Physiatry 681-8732

Primary Care

Golden Valley Medical Center 681-8500
KRMC Family Practice
Residency Clinic 681-8701
KRMC Primary Care 681-8530
Mountain Shadow Family Medicine . . 681-8530

Pulmonary Care

Kingman Pulmonary Associates 757-3133
KRMC Lung Health Program 681-8736

Sleep Disorders

KRMC Sleep Disorders Center 692-4144

Speech Therapy

KRMC Speech &
Hearing Specialists 681-8717

Sports Medicine

Kingman Orthopedics 681-8693

Thoracic Surgery

Kingman Thoracic Surgery 681-8520

Urgent Care

KRMC Urgent Care 753-3303

Urology

Kingman Urology 681-8686

Vein Center

High Desert Vein Center Kingman . . 681-8755